



100W COB LED Lighting Heat Pipes Module



Features :

- Best 100W Cost Performance Thermal Solution
- Patented Tightly Embedded Flat Heat Pipes for Minimum Thermal Resistance – 0.375~0.5°C/W
- Best Fit Most Popular 100W Rating COBs – Bridgelux Vero 29 and Cree CXB 3590
- Preset Mounting Holes for COB LED Lighting Mounting Conveniences
- Advanced Finishing Process for Corrosion Protection
- Modular Design for Flexible Combination and Diversified Applications

Product Information:

Model Number: DG180-100-A01

Cooling Surface(mm²): 398928

Thermal Resistance(°C/W):0.375~0.5

Weight: 1.1 kgs/2.4 lbs

Surface Treatment Options: Electrophoresis Black

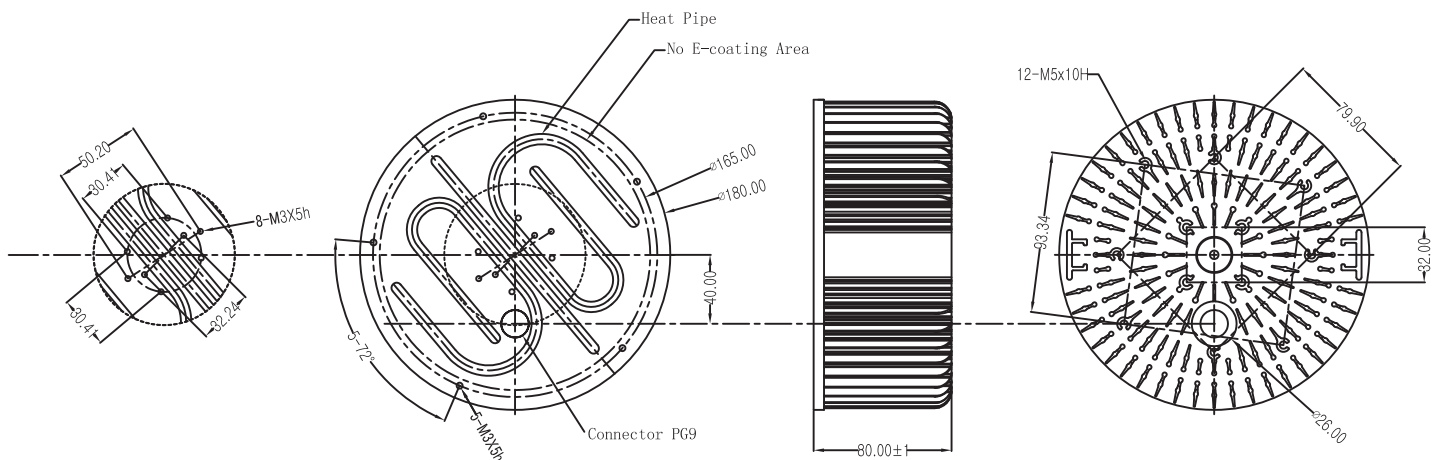
Dimension (mm): ϕ 180X80

Cooling Performance (lm): 10000~14000

Dissipated Power (W): 100

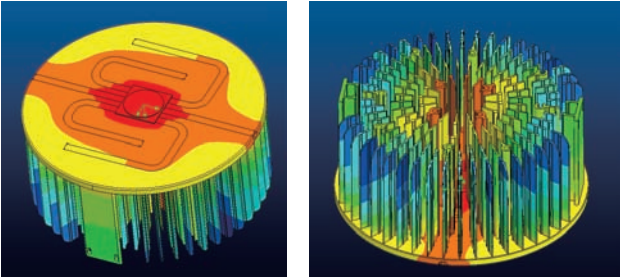
Material: AL1070 with 3pcs ϕ 6mm heat pipes

100W Heat Pipes Module Dimensions:



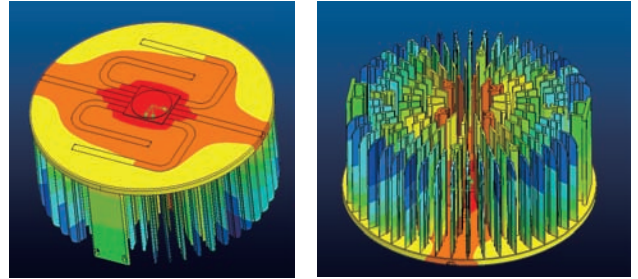
Heat Dissipation Simulation:

Simulation under Cree CXB3590 COB



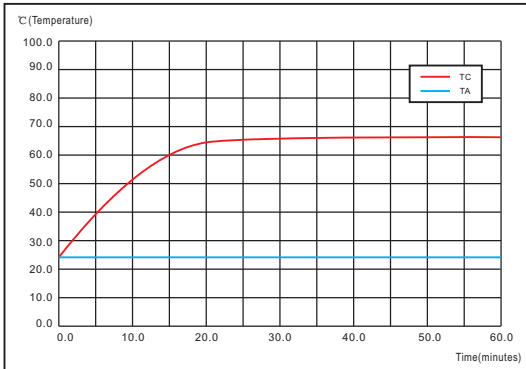
Power =100W: Ta=25 Tc=62.5 $\Delta T=37.5$ Rca=0.375°C/W

Simulation under BridgeLux Vero 29 COB

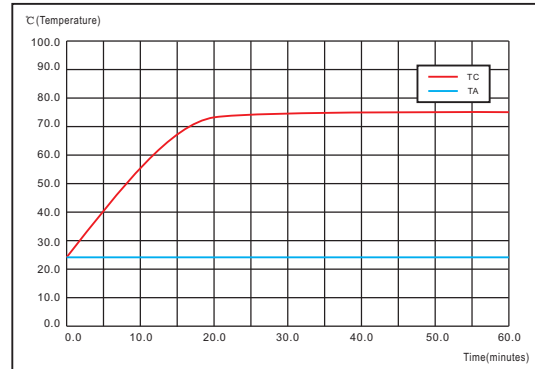


Power =100W: Ta=25 Tc=75 $\Delta T=50$ Rca=0.5°C/W

Temperature Rise Curve:



Model Number	LED Power (W)	Ambient Temperature Ta (°C)	Heat Sink Temperature Tc (°C)	Temperature Rise ΔT (°C)	Thermal resistance Rca (°C/W)	Angle of LED Simulator
DG180-100-A01	100	25	62.5	37.5	0.375	90°



Model Number	LED Power (W)	Ambient Temperature Ta (°C)	Heat Sink Temperature Tc (°C)	Temperature Rise ΔT (°C)	Thermal resistance Rca (°C/W)	Angle of LED Simulator
DG180-100-A01	100	25	75	50	0.5	90°

Applications:

A great variety of applications in High Bay Light, Down Light, Flood Light, Street Light, Sports Light, and more.

