



50~70W COB LED Lighting Heat Sink Module



Features :

- Best Cost/Performance Custom Solution for 50~70 W COB & SMD LED Lighting; Thermal Resistance 0.57~0.66°C/W
- Best Thermal Performance - Pure Aluminum AL1070 Made by Cold-Forging Techniques much better than Conventional Extrusion or Die-Casting Techniques
- Pure Aluminum AL1070 Material for Superior Thermal Conductivity – 238W/(m*K)
- Flexible Adaption with Multiple Choices of COB or SMD LED Modules
- Advanced Surface Treatment for Best IP Rating and Corrosion Protection
- Custom Color Options: Anodized Black or Clear; Electrophoresis Black
- Great Varieties of Applications: Track Light, Down Light etc

Product Information:

Model Number: DG131-085-001

Cooling Surface(mm²): 312110

Thermal Resistance(°C/W):0.57~0.66

Weight: 0.63 kgs/1.37 lbs

Surface Treatment Options: Anodized Black or Clear; Electrophoresis Black

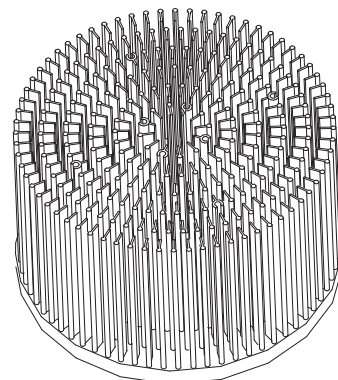
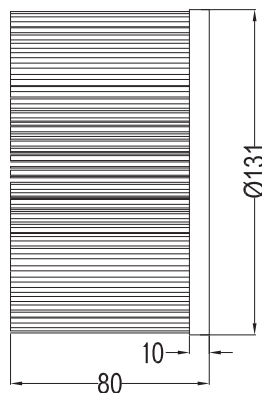
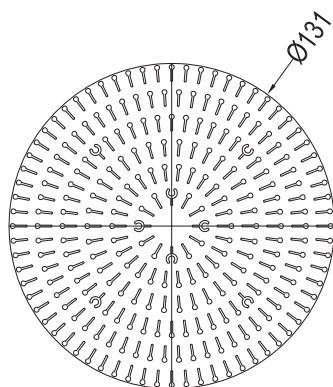
Dimension (mm): ϕ 131X80

Cooling Performance (lm): 6000~8400

Dissipated Power (W): 50~70

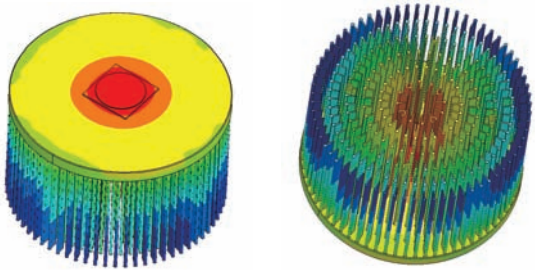
Material: AL1070

50~70W Heat Sink Module Dimensions:



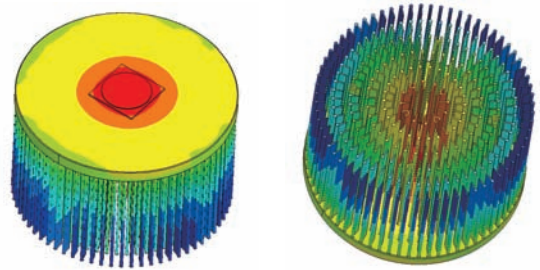
Heat Dissipation Simulation:

Simulation under Cree CXB3550 COB-70W



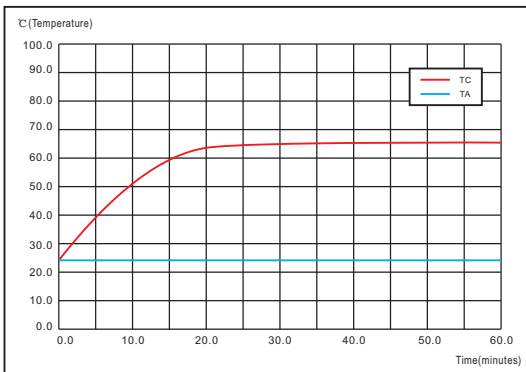
Power =70W: Ta=25 Tc=65 $\Delta T=33$ Rca=0.57°C/W

Simulation under Cree CXB3550 COB-50W

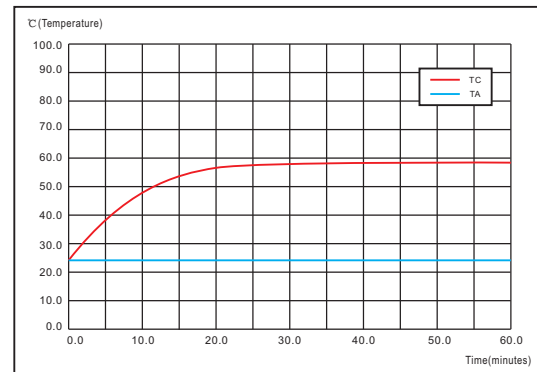


Power =50W: Ta=25 Tc=58 $\Delta T=33$ Rca=0.66°C/W

Temperature Rise Curve:



Model Number	LED Power (W)	Ambient Temperature Ta (°C)	Heat Sink Temperature Tc (°C)	Temperature Rise ΔT (°C)	Thermal resistance Rca (°C/W)	Angle of LED Simulator
DG131-085-001	70	25	65	40	0.57	90°



Model Number	LED Power (W)	Ambient Temperature Ta (°C)	Heat Sink Temperature Tc (°C)	Temperature Rise ΔT (°C)	Thermal resistance Rca (°C/W)	Angle of LED Simulator
DG131-085-001	50	25	58	33	0.66	90°

Applications:

A great variety of applications in Track Light, Down Light and more.

