

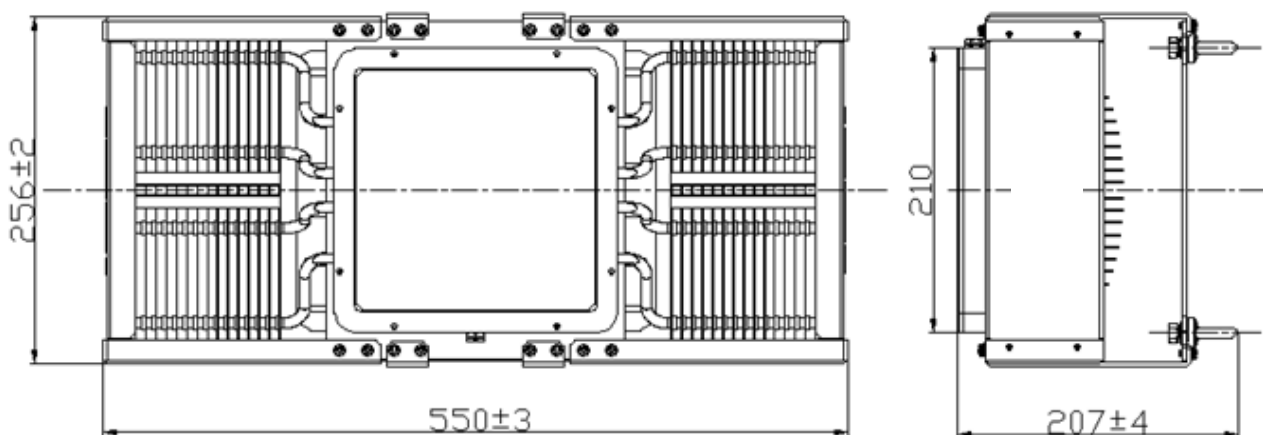
600W Grow Light Heat Sink Assembly HF2600-001-A01 (600 W)



Features :

- Patented Flat & Tight Heat Pipes Embedding and Fins Riveting Technologies for Best Thermal Performance due to Minimum Thermal Resistance.
- Combined Technologies of Heat Pipes, Extrusion, and Stamping for Most Optimal Cost/Thermal Performance.
- Low Profile Designs Best Fit (Shelf) Vertical Farming and Green House Farming.
- Custom Designed Reflector & Mounting Accessories Allow Flexibility of Desired Beam Angles and Installation.
- Respirator Design Allows Air Exchange to Avoid Foggy Condition.
- Tempered Glass Cover for High Heat Durability and Impact Protection.
- Advanced Surface Treatment by Electrophoresis Coating for Best Corrosion Protection.
- IP 65 Rated Ingress Protection.

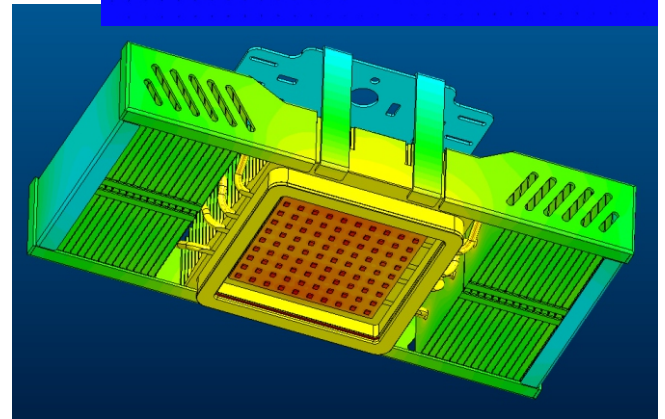
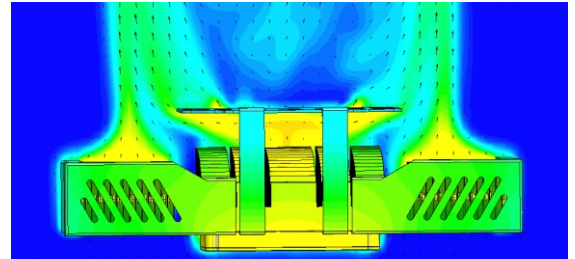
Dimensions:



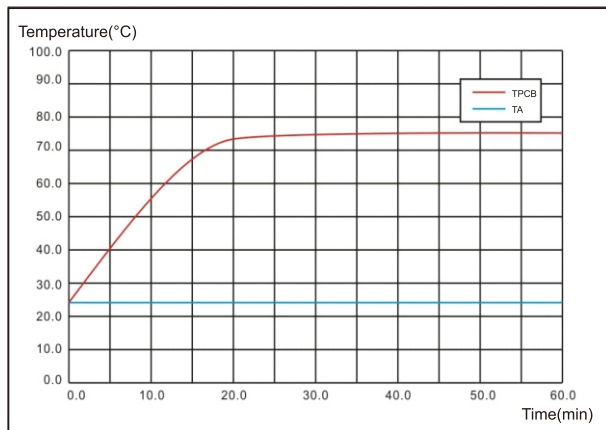
Product Information:

Model Number: HF2600-001-A01
 Dimension (mm): 550*256*207
 Luminous flux (lm): 72,000~84,000
 Thermal Resistance(°C/W): 0.11~0.155
 Dissipated Power (W): 600
 Weight (KG): 7.8
 Material: AL6063 & AL1100
 Surface treatment : Electrophoresis (E-coating) Black

Heat Dissipation Simulation:



Temperature Rise Curve:



Item	LED Power (W)	Ambient Temperature Ta (°C)	PC Board Temperature Tpcb (°C)	Temperature Rise ΔT (°C)	Thermal resistance Rc-a (°C/W)	Angle of LED Simulator
HF2600-001-A01	600	25	76.5	51.5	0.132	90°

Applications:

A great variety of applications in Grow Light, Vertical Farming and Green House Farming, etc.

