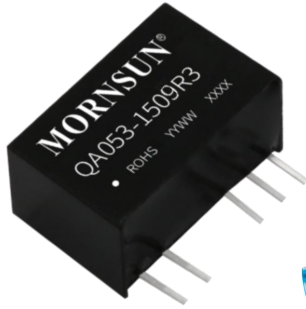


IGBT MOSFET driver power supply



RoHS



FEATURES

- Reinforced insulation
- I/O isolation test voltage: 5.0kVAC
- Continuous barrier withstand voltage 1700V
- Characterised CMTI>200kV/μs
- Max. Capacitive Load: 2200μF
- High efficiency up to 87%
- SIP package
- Ultra-low isolation capacitance: 3.5pF (typ.)
- Operating ambient temperature range: -40°C to +105°C
- Continuous short-circuit protection

QAxx3-R3 is DC-DC module power supply designed for IGBT driver requiring two sets of isolation power supply. The mode of common ground outputs is adopted internally for better energy provision of IGBT turn-on and turn-off. Output short-circuit protection and self-recovery capabilities are also provided. General application includes:

1. Universal converter
2. AC servo drive system
3. Electric welding machine
4. Uninterruptible power supply (UPS)

Selection Guide

Part No.	Input		Output		Full Load Efficiency (%) Typ.	Max. Capacitive Load(μF)
	Voltage(VDC) (Range)	Current(mA, Typ.) Full Load/No Load	Voltage (VDC) +Vo1/+Vo2	Current (mA) +Io1/+Io2		
QA053-1509R3	5 (4.5-5.5)	382/62	+15.0/-8.7	+80/-40	78/82	1000
QA123-1509R3	12 (10.8-13.2)	242/8	+15.0/-9.0	+100/-100	82/87	2200
QAW123-1509R3	12 (9-15)	242/8				
QA153-1509R3	15 (13.5-16.5)	195/8				
QA243-1509R3	24 (21.6-26.4)	135/9			77/82	

Note:*The specified maximum capacitive load for positive and negative output is identical.

Input Specifications

Item	Operating Conditions			Min.	Typ.	Max.	Unit
Input Voltage (1sec. max.)	Vin=5VDC	DC		-0.7	--	9	VDC
	Vin=12VDC	DC		-0.7	--	18	
	Vin=15VDC	DC		-0.7	--	21	
	Vin=24VDC	DC		-0.7	--	30	
Input Filter				Capacitance Filter			
Hot Plug				Unavailable			

Output Specifications

Item	Operating Conditions			Min.	Typ.	Max.	Unit
Output Voltage	QA053-1509R3	+Vo	Vin=5VDC, Pin6 & Pin7 +Io= +80mA	14.55	15.3	16.05	VDC
		-Vo	Vin=5VDC, Pin5 & Pin6 -Io= -40mA	-8.32	-8.76	-9.20	
	QA123-1509R3	+Vo	Vin=12VDC, Pin6 & Pin7 +Io= +100mA	13.50	14.25	15.00	
		-Vo	Vin=12VDC, Pin5 & Pin6 -Io= -100mA	-7.92	-8.37	-8.82	

	QAW123-1509R3	+Vo	Vin=12VDC, Pin6 & Pin7 +Io= +100mA	13.50	14.25	15.00	
		-Vo	Vin=12VDC, Pin5 & Pin6 -Io= -100mA	-7.92	-8.37	-8.82	
	QA153-1509R3	+Vo	Vin=15VDC, Pin6 & Pin7 +Io= +100mA	14.25	15.00	15.75	
		-Vo	Vin=15VDC, Pin5 & Pin6 -Io= -100mA	-7.92	-8.37	-8.82	
	QA243-1509R3	+Vo	Vin=24VDC, Pin6 & Pin7 +Io= +100mA	14.55	15.30	16.05	
		-Vo	Vin=24VDC, Pin5 & Pin6 -Io= -100mA	-8.37	-8.82	-9.27	
Voltage Accuracy			10% - 100% load	See output regulation curve (Fig. 2- Fig. 9)			
Linear Regulation	5V Input model	Full voltage input range	+Vo Output	--	±1.1	±1.4	--
			-Vo Output	--	±1.1	±1.4	
	Other model		+Vo Output	--	±1.1	±1.5	
			-Vo Output	--	±1.1	±1.5	
Load Regulation	5V Input model	10% - 100% load	+Vo Output	--	8	15	%
			-Vo Output	--	10	15	
	Other model		+Vo Output	--	6	15	
			-Vo Output	--	8	15	
Temperature Coefficient			Full load	--	±0.04	±0.1	%/°C
Ripple & Noise*	5V Input model	20MHz bandwidth		--	50	150	mVp-p
	Other Input model			--	50	100	
Short-circuit Protection				Continuous, self-recovery			

Note:* The "parallel cable" method is used for Ripple and Noise test, please refer to DC-DC Converter Application Notes for specific information.

General Specifications

Item	Operating Conditions	Min.	Typ.	Max.	Unit
Isolation	Input-output, Test for 1 minute with a leakage current of 1mA max	5000	--	--	VAC
Continuous barrier withstand voltage	Input- output (According to 61800-5-1)	1700	--	--	V
CMTI	Input- output	±200	--	--	kV/μs
Insulation Resistance	Input-output resistance at 500VDC	1000	--	--	MΩ
Isolation capacitor	Input- output, capacitor at 100kHz/0.1V	--	3.5	5	pF
Operating Temperature	Derating when operating temperature ≥85°C, (see Fig. 1)	-40	--	105	°C
Storage Temperature		-55	--	125	
Pin Soldering Resistance Temperature	Soldering spot is 1.5mm away from case for 10s seconds	--	--	300	
Case Temperature Rise	Ta=25°C, nominal input voltage, full load	--	30	60	
Storage Humidity	Non-condensing	5	--	95	%RH
Switching Frequency	Full load, nominal input voltage	--	200	--	kHz
MTBF	MIL-HDBK-217F@25°C	3500	--	--	k hours

Mechanical Specifications

Case Material	Black plastic; flame-retardant and heat-resistant
Dimensions	19.50 x 9.80 x 12.50mm
Weight	4.3g(Typ.)
Cooling Method	Free air convection

Electromagnetic Compatibility (EMC)

Emissions	CE	5V Input model	CISPR32/EN55032	CLASS B (see Fig.17 for recommended circuit)
		Other Input model	CISPR32/EN55032	CLASS A (see Fig.17 for recommended circuit)
	RE	5V Input model	CISPR32/EN55032 CISPR32/EN55032	CLASS A (see Fig.17 for recommended circuit) CLASS B (see Fig.18 for recommended circuit)

		Other Input model	CISPR32/EN55032	CLASS A (see Fig.17 for recommended circuit)
Immunity	ESD	5V Input model	IEC/EN61000-4-2	Contact ±6kV perf. Criteria B
		Other Input model	IEC/EN61000-4-2	Contact ±8kV perf. Criteria B

Typical Characteristic Curves

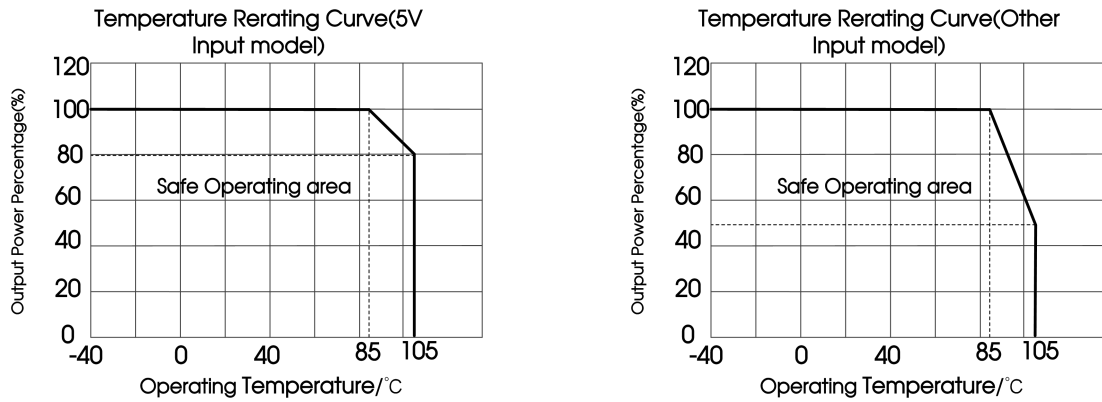


Fig. 1

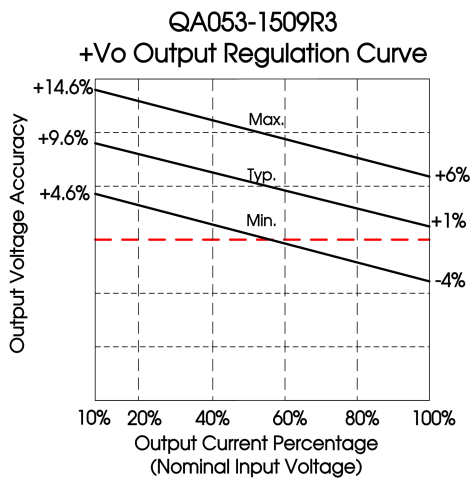


Fig. 2

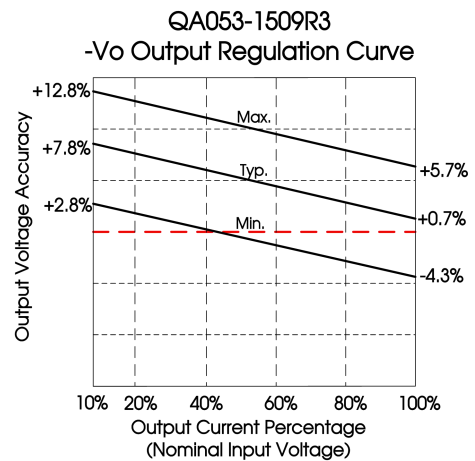


Fig. 3

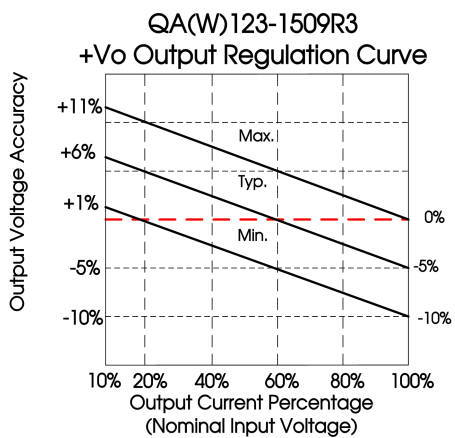


Fig. 4

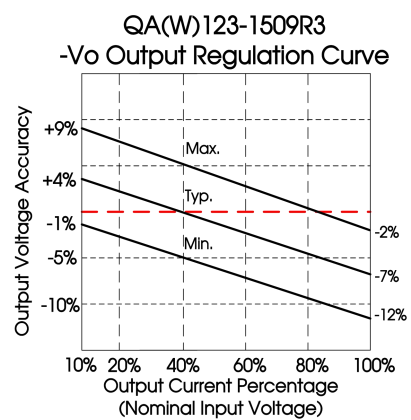


Fig. 5

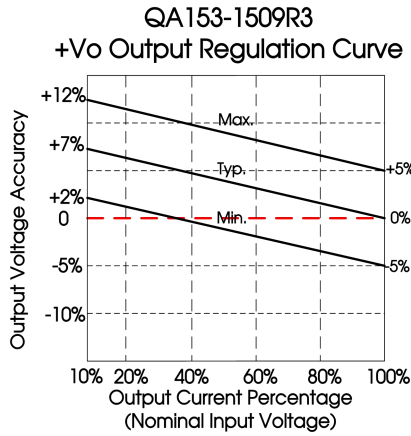


Fig. 6

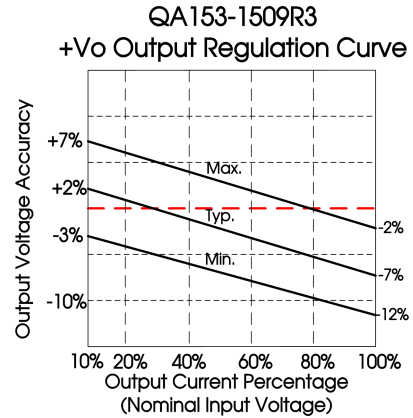


Fig. 7

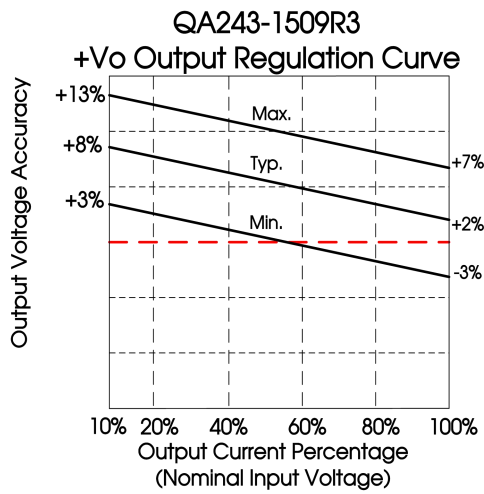


Fig. 8

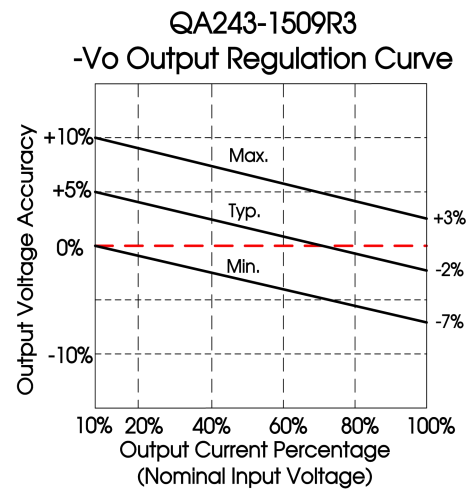


Fig. 9

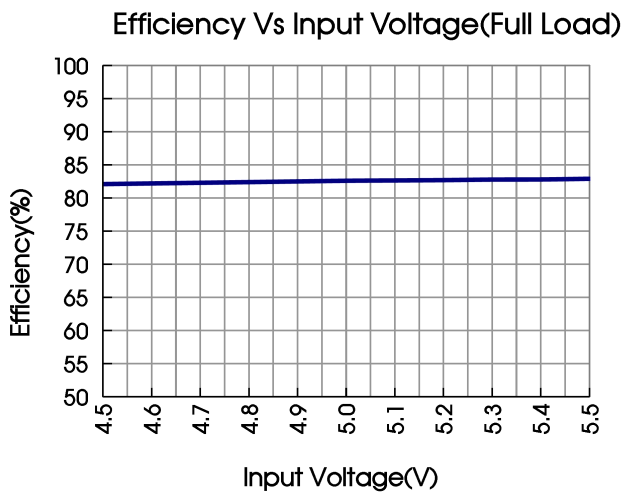


Fig. 10 (5V Input)

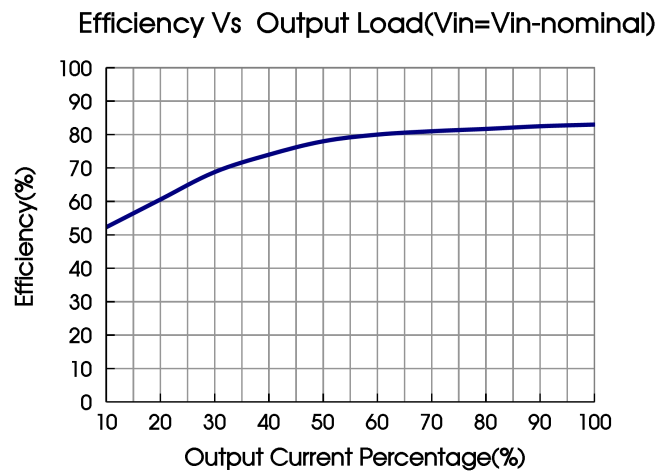


Fig.11 (5V Input)

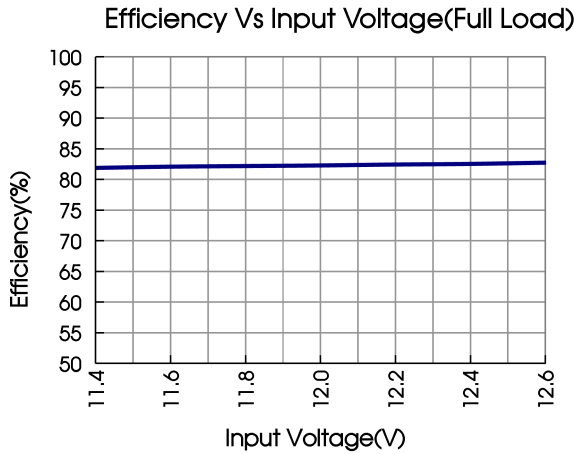


Fig. 12

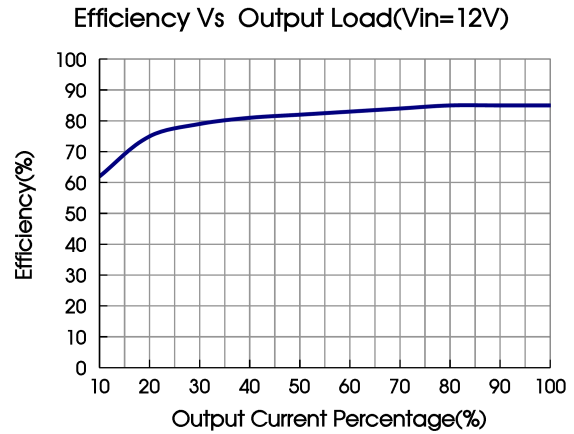


Fig. 13

Note: Take QA053-1509R3 and QA123-1509R3 as an example, other models can be corresponding reference

Design Reference

1. Test configurations

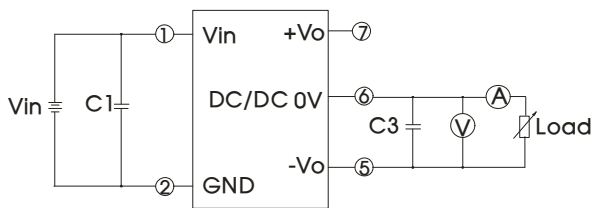


Fig. 14

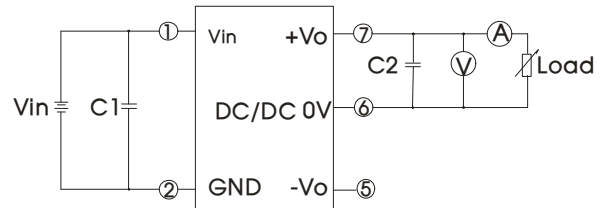


Fig.15

Note: C1, C2, C3: 100µF/35V(low resitors)

2. Typical application

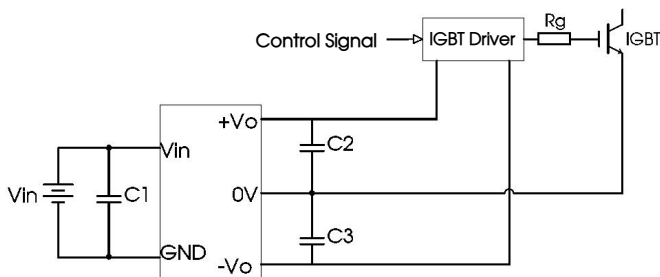


Fig. 16

C1/C2/C3
100µF/35V(Low internal resistance)

3. EMC typical recommended circuit (CLASS A)

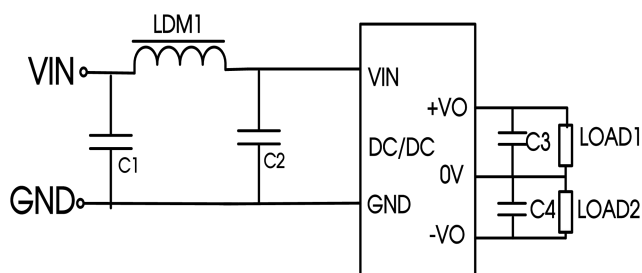


Fig. 17

Device selection			
Project	5V Input model	Other Input model	
EMI	C1/C2	4.7µF /16V 10µF /50V (Low internal resistance)	1µF/50V 100µF/30V (Low internal resistance)
	C3/C4		
	LDM	6.8µH	33µH

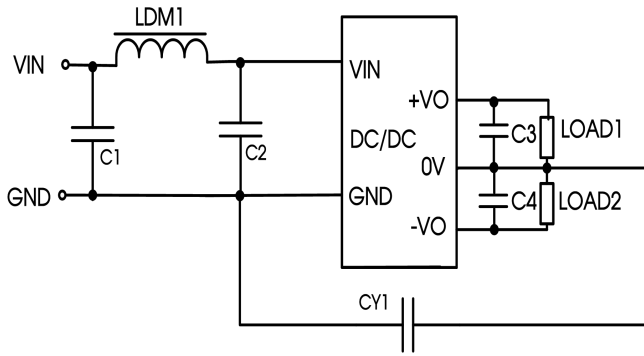


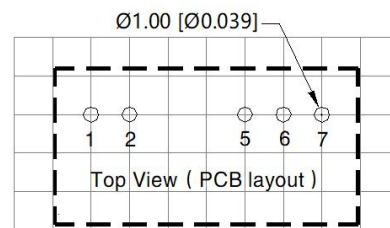
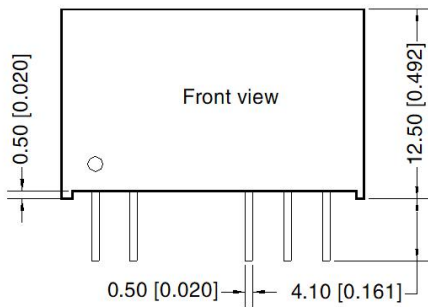
Fig. 18

Device selection (5V Input model)		
EMI	C1/C2	4.7μF /16V
	C3/C4	10μF /50V(Low internal resistance)
	LDM	6.8μH
	CY1	330pF

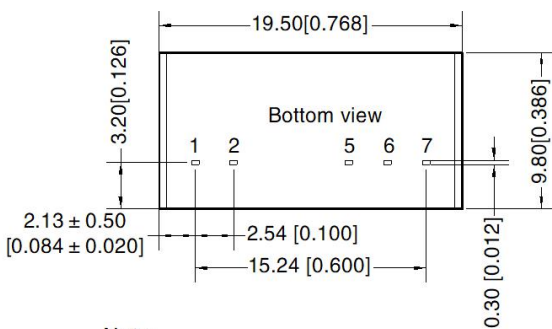
4. Electrolytic capacitors are recommended for external capacitors at the input or output of the product. Tantalum capacitors are not, otherwise there is a risk of failure.
5. The products do not support parallel connection of their output for power expansion purpose or hot-plug.
6. For more information please find the application notes on www.mornsun-power.com

Dimensions and Recommended Layout

THIRD ANGLE PROJECTION



Note: Grid 2.54*2.54mm



Pin-Out	
Pin	Mark
1	Vin
2	GND
5	-Vo
6	0V
7	+Vo

Note:
Unit: mm[inch]
Pin section tolerances: ±0.10[±0.004]
General tolerances: ±0.50[±0.020]

Notes:

1. For additional information on Product Packaging please refer to www.mornsun-power.com. Packaging bag number: 58200013;
2. The lead connecting the power supply module and IGBT driver should be as short as possible during use;
3. The output filtering capacitor should be as close as possible to the power supply module and IGBT driver;
4. The peak of the IGBT driver gate drive current is high, so low internal resistance electrolytic capacitor is recommended to be used for the power supply module output filter capacitor;
5. The average output power of the driver must be lower than that of the power supply module;
6. Consider fixing with glue near the module if being used in vibration occasion;
7. The maximum capacitive load offered were tested at nominal input voltage and full load;
8. Unless otherwise specified, parameters in this datasheet were measured under the conditions of $T_a=25^{\circ}\text{C}$, humidity<75%RH with nominal input voltage and rated output load;
9. All index testing methods in this datasheet are based on company corporate standards;
10. The above are the performance indicators of the product models listed in this datasheet. Some indicators of non-standard models will exceed the above requirements. For details, please contact our technical staff;
11. We can provide product customization service, please contact our technicians directly for specific information;
12. Products are related to laws and regulations: see "Features" and "EMC".
13. Our products shall be classified according to ISO14001 and related environmental laws and regulations, and shall be handled by qualified units

MORNSUN Guangzhou Science & Technology Co., Ltd.

Address: No. 5, Kehui St. 1, Kehui Development Center, Science Ave., Guangzhou Science City, Huangpu District, Guangzhou, P. R. China

Tel: 86-20-38601850

Fax: 86-20-38601272

E-mail: info@mornsun.cn

www.mornsun-power.com

MORNSUN®

MORNSUN Guangzhou Science & Technology Co., Ltd.