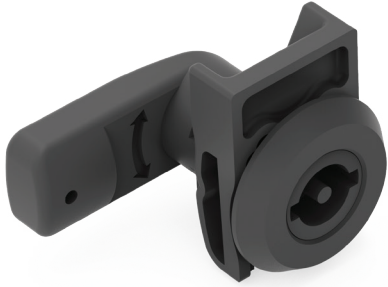


▶ QUARTER-TURN LOCKS

QUARTER TURN – EASY FIXING

761



NEW

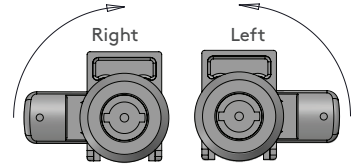
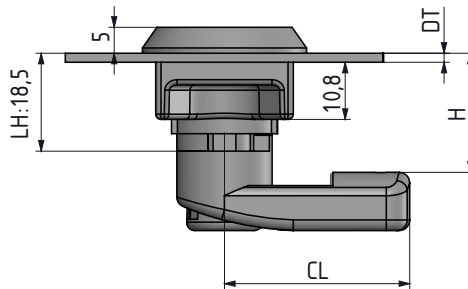
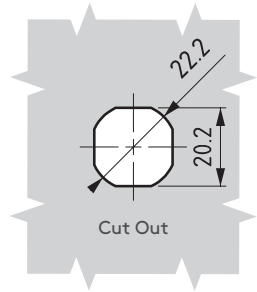
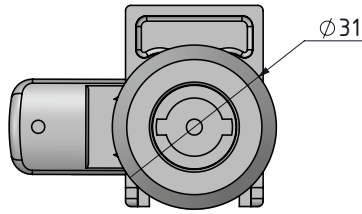
RoHS



IP 66



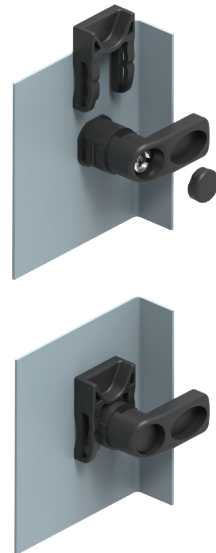
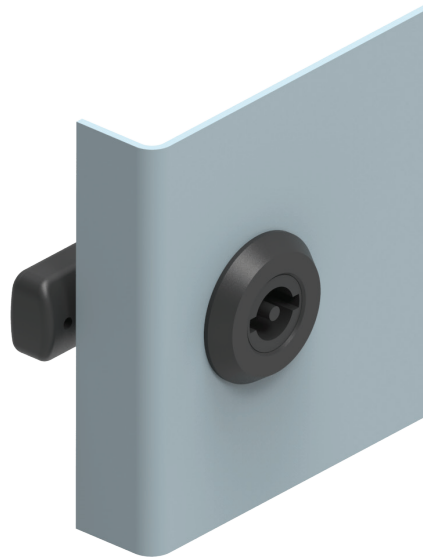
V:1



- Easy assembly by plastic clips
- Applicable on different panel thicknesses
- Various driver options are possible
- Standard cut out

MATERIAL

HOUSING: Polyamide DIN-EN ISO 1043-1 PA6 GFR 30
 DRIVER: Plastic or zamak
 CAM: Plastic or steel



320.02.221
BOLT COVER (For grounding)

- Can order separately (only for plastic cams)

Note: For different colors please contact Essentra

DOOR THICKNESS	DT
1.2 -1.8 mm panel	12
1.8 -2.3 mm pane	23

DOOR DIRECTION	
Right hand	001
Left hand	002

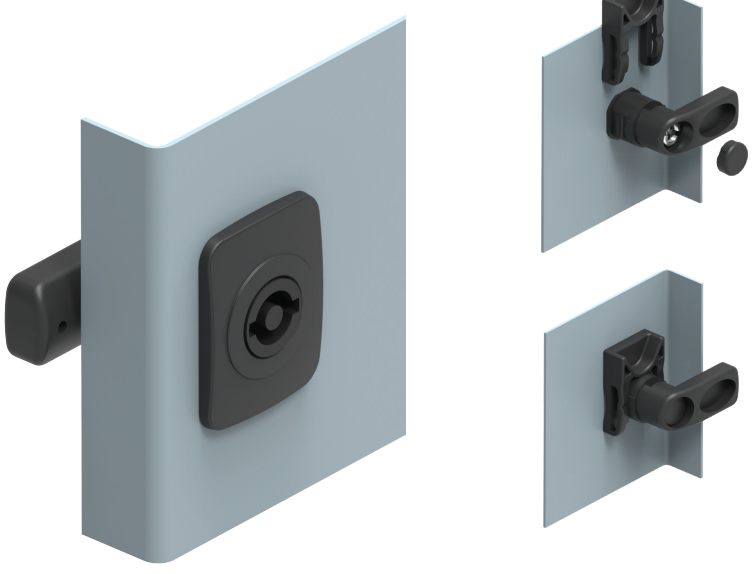
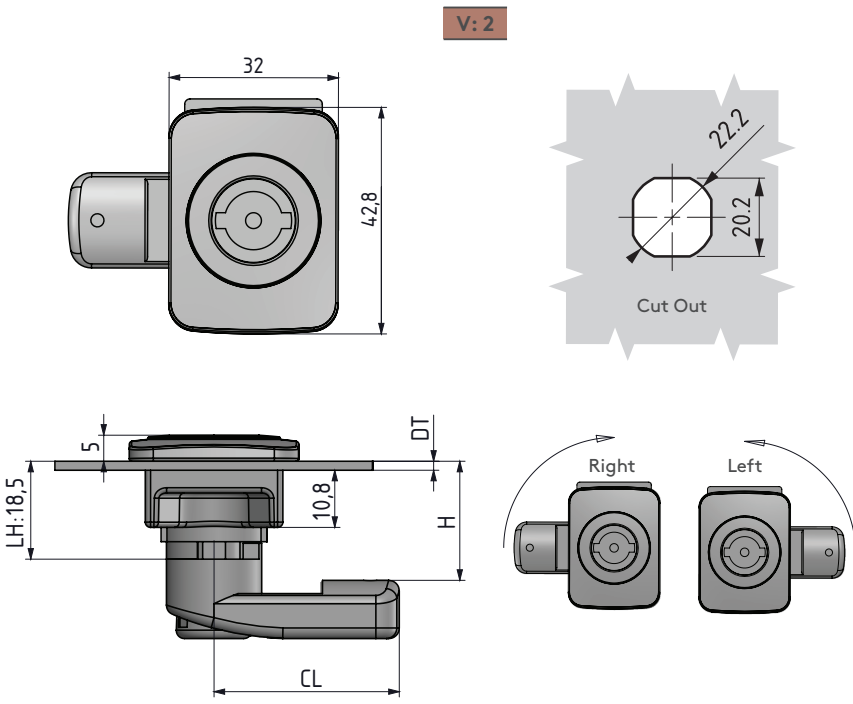
MATERIAL	M	FINISH	F
Zamak	1	Chrome plated	1
		Black coated	2
Plastic	2	No finish	0

- For cams please check pages: 170 - 171
- For drivers please check page: 194
- For keys please check pages: 189 - 191

Group Code	Version	Driver	Driver No	Door Thickness	Cam	Door Direction
761	1	M F	DD	DT	CC	



761 QUARTER TURN – EASY FIXING






- Easy assembly by plastic clips
- Applicable on different panel thicknesses
- Various driver options are possible
- Logo application upon request
- Standard cut out

MATERIAL
 HOUSING: Polyamide DIN-EN ISO 1043-1 PA6 GFR 30
 DRIVER: Plastic or zamak
 CAM: Plastic or steel

 **320.02.221 BOLT COVER** (For grounding)




- Can order separately (only for plastic cams)

 **Note:** For different colors please contact Essentra

DOOR THICKNESS		DT	DOOR DIRECTION	
1.2 -1.8 mm panel		12	Right hand	001 
1.8 -2.3 mm pane		23	Left hand	002 

MATERIAL	M	FINISH	F
Zamak	1	Chrome plated	1
		Black coated	2
Plastic	2	No finish	0

Group Code	Version	Driver	Driver No	Door Thickness	Cam	Door Direction
761	2	M F	DD	DT	CC	

-  For cams please check pages: 170 - 171
-  For drivers please check page: 194
-  For keys please check pages: 189 - 191