

**INNOVATIVE
COMPONENTS, INC.**
AN ESSENTRA COMPANY

New & Expanded Product Lines

PLASTIC KNOBS



www.innovative-components.com

☎ 800-566-2774

✉ sales@knobsources.com

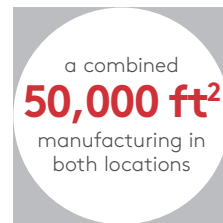
GLOBAL REACH WITH A LOCAL TOUCH

We bring together the best products, ideas and distribution.

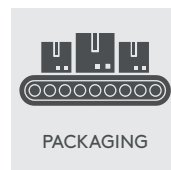
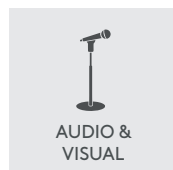
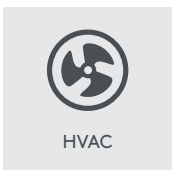
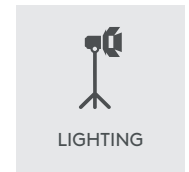
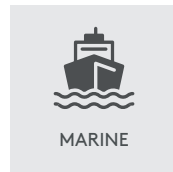
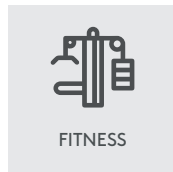
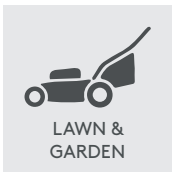


WHO IS INNOVATIVE COMPONENTS?

We are global manufacturers and distributors of vital component parts for hundreds of markets and thousands of products. We're proud of what we do and believe that even the smallest products have a big part to play.

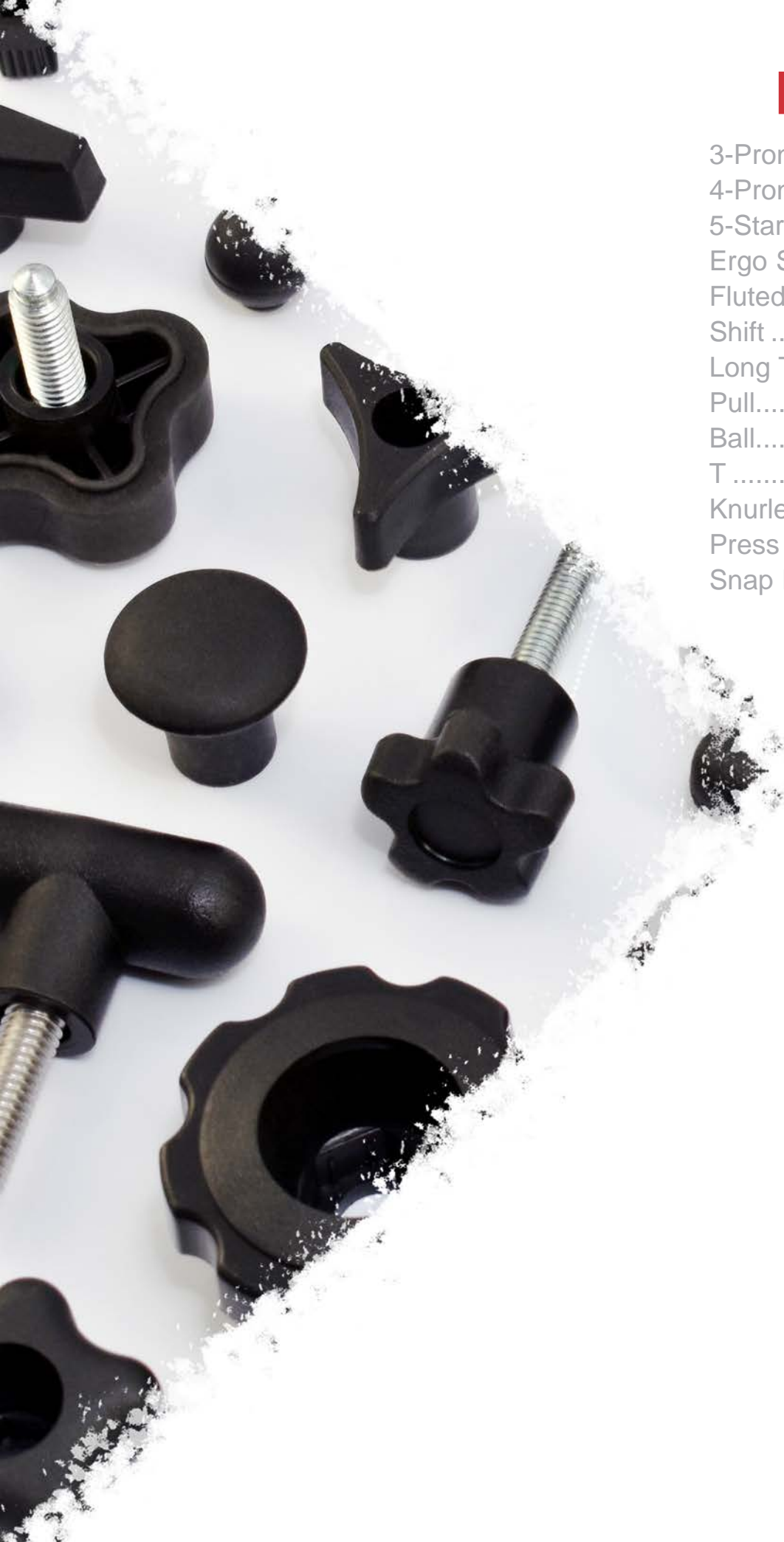


OUR KEY MARKETS



KNOBS

3-Prong.....	4 - 5
4-Prong.....	5 - 7
5-Star.....	8
Ergo Star	9
Fluted.....	10 - 11
Shift	11 - 12
Long Tapered	13
Pull.....	13
Ball.....	14 - 15
T	16 - 18
Knurled	18 - 20
Press On	20
Snap Lock	21



3-PRONG KNOBS

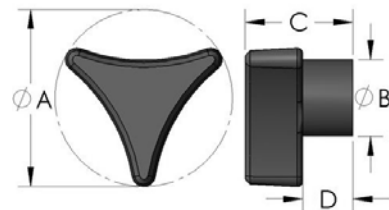
3P Series



Style 1

Style 2

Style 3



Specifications

- Knob Material: Polypropylene
- Insert Material: See Table
- Color: Black

Features

- Economical design for light to medium-duty securing and clamping applications
- Resistant to water and solvents
- Textured finish to help hide dirt and scratches in the field
- Impact resistant
- Stop Nut / Lock Nut provides anti-vibration locking mechanism

Female Knobs

Item No.	A in	Thread Size	B in	C in	D in	Style Number	Thread Type	Insert Material	Plating Material	Bulk Pack Qty.
KN02----3P1--21	1.250	10-32	0.620	0.950	0.500	Style 2	Free Spinning	Steel	Clear Zinc	1000
KN4C----3P1--21	1.250	1/4-20	0.620	0.950	0.500	Style 2	Free Spinning	Steel	Clear Zinc	1000
KN4C----3P1B-21	1.250	1/4-20	0.620	0.950	0.500	Style 1	Blind	Steel	Clear Zinc	1000
KN5C----3P1--22	1.250	5/16-18	0.620	0.950	0.500	Style 2	Free Spinning	Steel	Yellow Zinc	1000
KN04----3P4--21	1.750	10-24	0.750	1.050	0.490	Style 2	Free Spinning	Steel	Clear Zinc	1200
KN4C----3P4--21	1.750	1/4-20	0.750	1.050	0.490	Style 2	Free Spinning	Steel	Clear Zinc	1200
KN4C----3P4B-21	1.750	1/4-20	0.750	1.050	0.490	Style 1	Blind	Steel	Clear Zinc	1200
KN4C----3P4L-21	1.750	1/4-20	0.750	1.050	0.490	Style 2	Stop Nut	Steel	Clear Zinc	1200
KN5C----3P4--21	1.750	5/16-18	0.750	1.050	0.490	Style 2	Free Spinning	Steel	Clear Zinc	1200
KN5C----3P4L-21	1.750	5/16-18	0.750	1.050	0.490	Style 2	Stop Nut	Steel	Clear Zinc	1200
KN6C----3P4--21	1.750	3/8-16	0.750	1.050	0.490	Style 2	Free Spinning	Steel	Clear Zinc	1200
KN6C----3P4B-21	1.750	3/8-16	0.750	1.050	0.490	Style 1	Blind	Steel	Clear Zinc	1200

Male Knobs

Item No.	A in	Thread Size	B in	C in	D in	Style Number	Stud Length in	Insert Material	Plating Material	Bulk Pack Qty.
KN4C07503P1--21	1.250	1/4-20	0.620	0.950	0.500	Style 3	0.750	Steel	Clear Zinc	900
KN4C10003P1--2R	1.250	1/4-20	0.620	0.950	0.500	Style 3	1.000	Steel	Clear Zinc	850
KN0405003P4--21	1.750	10-24	0.750	1.050	0.490	Style 3	0.500	Steel	Clear Zinc	1000
KN4C07503P4--21	1.750	1/4-20	0.750	1.050	0.490	Style 3	0.750	Steel	Clear Zinc	1000
KN4C10003P4--21	1.750	1/4-20	0.750	1.050	0.490	Style 3	1.000	Steel	Clear Zinc	1000
KN4C15003P4--21	1.750	1/4-20	0.750	1.050	0.490	Style 3	1.500	Steel	Clear Zinc	800
KN4C17503P4--21	1.750	1/4-20	0.750	1.050	0.490	Style 3	1.750	Steel	Clear Zinc	850
KN4C20003P4--21	1.750	1/4-20	0.750	1.050	0.490	Style 3	2.000	Steel	Clear Zinc	750
KN5C05003P4--21	1.750	5/16-18	0.750	1.050	0.490	Style 3	0.500	Steel	Clear Zinc	1000
KN5C06253P4--21	1.750	5/16-18	0.750	1.050	0.490	Style 3	0.625	Steel	Clear Zinc	500
KN5C07503P4--21	1.750	5/16-18	0.750	1.050	0.490	Style 3	0.750	Steel	Clear Zinc	500
KN5C12503P4--21	1.750	5/16-18	0.750	1.050	0.490	Style 3	1.250	Steel	Clear Zinc	300
KN5C15003P4--21	1.750	5/16-18	0.750	1.050	0.490	Style 3	1.500	Steel	Clear Zinc	400
KN5C17503P4--21	1.750	5/16-18	0.750	1.050	0.490	Style 3	1.750	Steel	Clear Zinc	600
KN6C10003P4--2R	1.750	3/8-16	0.750	1.050	0.490	Style 3	1.000	Steel	Clear Zinc	400
KN6C15003P4--21	1.750	3/8-16	0.750	1.050	0.490	Style 3	1.500	Steel	Clear Zinc	400
KN6C25003P4--21	1.750	3/8-16	0.750	1.050	0.490	Style 3	2.500	Steel	Clear Zinc	275

Other configurations, thread sizes, materials, and customizations available upon request.



CUSTOM SOLUTIONS AVAILABLE

Our expertise ranges across multiple industries, supported by outstanding customer service. We can reduce your lead times and provide custom solutions and advice to help you achieve your business goals.

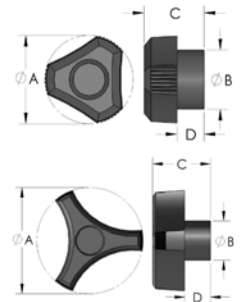
3-PRONG KNOBS / 4-PRONG KNOBS

RT Series



- Specifications
- Knob Material: See Table
 - Insert Material: See Table
 - Color: Black

- Features
- Economical design for light to medium-duty securing and clamping applications
 - Resistant to water and solvents
 - Textured finish to help hide dirt and scratches in the field
 - Impact resistant



Female Knobs

Item No.	A in	Thread Size	B in	C in	D in	Style Number	Thread Type	Insert Material	Plating Material	Knob Material	Bulk Pack Qty.
KN5C----RT5B-22	2.000	5/16-18	0.740	1.100	0.490	Style 1	Blind	Steel	Yellow Zinc	Polypropylene	800
KN5C----RT5--21	2.000	5/16-18	0.740	1.100	0.490	Style 2	Free Spinning	Steel	Clear Zinc	Polypropylene	800
KN6C----RT5--21	2.000	3/8-16	0.740	1.100	0.490	Style 2	Free Spinning	Steel	Clear Zinc	Polypropylene	800
KN6C----RT5B-21	2.000	3/8-16	0.740	1.100	0.490	Style 1	Blind	Steel	Clear Zinc	Polypropylene	800
KN6C----RT7--21	2.500	3/8-16	0.740	1.120	0.480	Style 2	Free Spinning	Steel	Clear Zinc	Polypropylene	500
KN6C----RT7B-21	2.500	3/8-16	0.740	1.120	0.480	Style 1	Blind	Steel	Clear Zinc	Polypropylene	500

Male Knobs

Item No.	A in	Thread Size	B in	C in	D in	Style Number	Stud Length in	Insert Material	Plating Material	Knob Material	Bulk Pack Qty.
KN020250RT2-N21	0.750	10-32	0.500	0.510	0.230	Style 3	0.250	Steel	Clear Zinc	Nylon	3000
KN020375RT2-N21	0.750	10-32	0.500	0.510	0.230	Style 3	0.370	Steel	Clear Zinc	Nylon	3000
KN4C1000RT5--21	2.000	1/4-20	0.740	1.100	0.490	Style 3	1.000	Steel	Clear Zinc	Polypropylene	500
KN5C1000RT5--21	2.000	5/16-18	0.740	1.100	0.490	Style 3	1.000	Steel	Clear Zinc	Polypropylene	250
KN5C0750RT5--21	2.000	5/16-18	0.740	1.100	0.490	Style 3	0.750	Steel	Clear Zinc	Polypropylene	800
KN5C1250RT5--21	2.000	5/16-18	0.740	1.100	0.490	Style 3	1.250	Steel	Clear Zinc	Polypropylene	300
KN6C1500RT5--21	2.000	3/8-16	0.740	1.100	0.490	Style 3	1.500	Steel	Clear Zinc	Polypropylene	500
KN6C2000RT5--21	2.000	3/8-16	0.740	1.100	0.490	Style 3	2.000	Steel	Clear Zinc	Polypropylene	500
KN6C3500RT5--21	2.000	3/8-16	0.740	1.100	0.490	Style 3	3.500	Steel	Clear Zinc	Polypropylene	150
KN6C1250RT7--21	2.500	3/8-16	0.740	1.120	0.480	Style 3	1.250	Steel	Clear Zinc	Polypropylene	400

Other configurations, thread sizes, materials, and customizations available upon request.

4P Series



Specifications:

- Knob Material: Phenolic
- Insert Material: See Table
- Color: Black

Features:

- 4-Lobe Knobs provide maximum grip and comfort
- High-gloss finish
- High impact resistance
- Resistant to oils, fuels and greases
- Excellent thermal and electrical resistance

Female Knobs

Item No.	A in	Thread Size	Style Number	Insert Material	Bulk Pack Qty.
KSP1000A	1.969	5/16 - 18	Style 1	Aluminum	100
KSP1100A	1.969	5/16 - 18	Style 2	Brass	100
KSP1200A	2.362	3/8 - 16	Style 1	Aluminum	100
KSP1300A	2.362	3/8 - 16	Style 2	Brass	100
KSP1400A	3.150	1/2 - 13	Style 1	Aluminum	100
KSP1500A	3.150	1/2 - 13	Style 2	Brass	100

Male Knobs

Item No.	A in	Thread Size	Style Number	Stud Length in	Insert Material	Bulk Pack Qty.
KSP2000A	1.969	5/16 - 18	Style 3	0.984	Steel	100
KSP2100A	2.362	3/8 - 16	Style 3	1.181	Steel	100
KSP2200A	3.150	1/2 - 13	Style 3	1.575	Steel	100

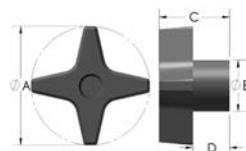
4-PRONG KNOBS

4P Series



Specifications

- Knob Material: Polypropylene
- Insert Material: See Table
- Color: Black



Features

- 4-Prong Knobs provide maximum grip and comfort
- Excellent for applications requiring high torque or heavy-duty clamping
- Resistant to water and solvents
- Textured finish to help hide dirt and scratches in the field
- Impact resistant
- Stop Nut / Lock Nut provides anti-vibration locking mechanism

Female Knobs

Item No.	A in	Thread Size	B in	C in	D in	Style Number	Thread Type	Insert Material	Plating Material	Bulk Pack Qty.
KN4C----4P4--21	1.750	1/4-20	0.750	1.020	0.520	Style 2	Free Spinning	Steel	Clear Zinc	1000
KN4C----4P4B-21	1.750	1/4-20	0.750	1.020	0.520	Style 1	Blind	Steel	Clear Zinc	1000
KN5C----4P4--21	1.750	5/16-18	0.750	1.020	0.520	Style 2	Free Spinning	Steel	Clear Zinc	1000
KN5C----4P4B-22	1.750	5/16-18	0.750	1.020	0.520	Style 1	Blind	Steel	Yellow Zinc	1000
KN4C----4P7--21	2.500	1/4-20	0.980	1.130	0.480	Style 2	Free Spinning	Steel	Clear Zinc	500
KN4C----4P7B-21	2.500	1/4-20	0.980	1.130	0.480	Style 1	Blind	Steel	Clear Zinc	500
KN5C----4P7--21	2.500	5/16-18	0.980	1.130	0.480	Style 2	Free Spinning	Steel	Clear Zinc	500
KN5C----4P7B-22	2.500	5/16-18	0.980	1.130	0.480	Style 1	Blind	Steel	Yellow Zinc	500
KN6C----4P7--21	2.500	3/8-16	0.980	1.130	0.480	Style 2	Free Spinning	Steel	Clear Zinc	500
KN6C----4P7B-21	2.500	3/8-16	0.980	1.130	0.480	Style 1	Blind	Steel	Clear Zinc	500
KN6C----4P7L-21	2.500	3/8-16	0.980	1.130	0.480	Style 2	Stop Nut	Steel	Clear Zinc	500
KN8C----4P7--21	2.500	1/2-13	0.980	1.130	0.480	Style 2	Free Spinning	Steel	Clear Zinc	500
KN8C----4P7B-21	2.500	1/2-13	0.980	1.130	0.480	Style 1	Blind	Steel	Clear Zinc	500

Male Knobs

Item No.	A in	Thread Size	B in	C in	D in	Style Number	Stud Length in	Insert Material	Plating Material	Bulk Pack Qty.
KN5C07504P4--21	1.750	5/16-18	0.750	1.020	0.520	Style 3	0.750	Steel	Clear Zinc	400
KN5C10004P4--21	1.750	5/16-18	0.750	1.020	0.520	Style 3	1.000	Steel	Clear Zinc	350
KN5C25004P4--21	1.750	5/16-18	0.750	1.020	0.520	Style 3	2.500	Steel	Clear Zinc	200
KN6C30004P4--21	1.750	3/8-16	0.750	1.020	0.520	Style 3	3.000	Steel	Clear Zinc	120
KN4C05004P7--21	2.500	1/4-20	0.980	1.130	0.480	Style 3	0.500	Steel	Clear Zinc	500
KN4C10004P7--21	2.500	1/4-20	0.980	1.130	0.480	Style 3	1.000	Steel	Clear Zinc	400
KN5C05004P7--21	2.500	5/16-18	0.980	1.130	0.480	Style 3	0.500	Steel	Clear Zinc	450
KN5C10004P7--21	2.500	5/16-18	0.980	1.130	0.480	Style 3	1.000	Steel	Clear Zinc	400
KN6C07504P7--21	2.500	3/8-16	0.980	1.130	0.480	Style 3	0.750	Steel	Clear Zinc	450
KN6C10004P7--21	2.500	3/8-16	0.980	1.130	0.480	Style 3	1.000	Steel	Clear Zinc	400
KN6C12504P7--21	2.500	3/8-16	0.980	1.130	0.480	Style 3	1.250	Steel	Clear Zinc	400
KN6C15004P7--21	2.500	3/8-16	0.980	1.130	0.480	Style 3	1.500	Steel	Clear Zinc	350
KN6C25004P7--21	2.500	3/8-16	0.980	1.130	0.480	Style 3	2.500	Steel	Clear Zinc	250

Other configurations, thread sizes, materials, and customizations available upon request.

Our expertise ranges across multiple industries, supported by outstanding customer service. We can reduce your lead times, and provide custom solutions to help you achieve your business goals.

INDUSTRIES



Lawn & Garden



Construction & Agriculture



Fitness



Marine



Industrial Manufacturing



Lighting



HVAC



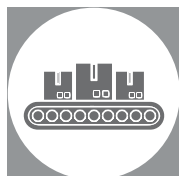
Medical



Science & Laboratory



Audio & Visual



Packaging



Sporting Goods

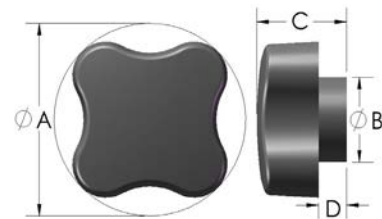


4S Series



Style 1

Style 3



Specifications

- Knob Material: Polypropylene
- Insert Material: See Table
- Color: Black

Features

- 4-Lobe Knobs provide maximum grip and comfort
- Available in two tone or soft touch material
- Excellent for applications requiring high torque or heavy-duty clamping
- Impact resistant

Female Knobs

Item No.	A in	Thread Size	B in	C in	D in	Style Number	Thread Type	Insert Material	Plating Material	Bulk Pack Qty.
KN4C----4S2B-90	1.400	1/4-20	0.550	0.640	0.180	Style 1	Blind	Brass	Plain	700
KN4C----4S4BL22	1.730	1/4-20	0.750	0.820	0.250	Style 1	Stop Nut	Steel	Yellow Zinc	400

Male Knobs

Item No.	A in	Thread Size	B in	C in	D in	Style Number	Stud Length in	Insert Material	Plating Material	Bulk Pack Qty.
KN0432504S1--21	1.150	10-24	0.500	0.650	0.250	Style 3	3.250	Steel	Clear Zinc	500
KN4C06254S1--90	1.150	1/4-20	0.500	0.650	0.250	Style 3	0.620	Brass	Plain	1000
KN4C03754S2--21	1.400	1/4-20	0.550	0.640	0.180	Style 3	0.370	Steel	Clear Zinc	700
KN5C20004S2--21	1.400	5/16-18	0.550	0.640	0.180	Style 3	2.000	Steel	Clear Zinc	400
KN4C05004S4--21	1.730	1/4-20	0.750	0.820	0.250	Style 3	0.500	Steel	Clear Zinc	800
KN5C05004S4--21	1.730	5/16-18	0.750	0.820	0.250	Style 3	0.500	Steel	Clear Zinc	800

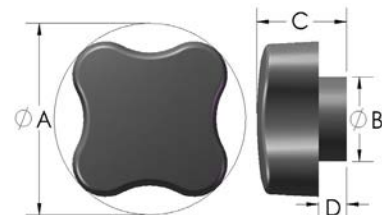
Other configurations, thread sizes, materials, and customizations available upon request.

4S Series - Soft Touch TPE



Style 1

Style 3



Specifications

- Knob Material: TPE (Rubber) Overlay w/ Polypropylene Base
- Insert Material: Steel - Clear Zinc
- Color: Black

Features

- 4-Lobe Knobs provide maximum grip and comfort
- Excellent for applications requiring high torque or heavy-duty clamping
- Impact resistant

Female Knobs

Item No.	A in	Thread Size	B in	C in	D in	Style Number	Thread Type	Bulk Pack Qty.
KN02----4S2BS21	1.400	10-32	0.550	0.640	0.180	Style 1	Blind	800
KN4C----4S2BS21	1.400	1/4-20	0.550	0.640	0.180	Style 1	Blind	700
KN5C----4S4BS21	1.730	5/16-18	0.750	0.820	0.250	Style 1	Blind	375

Male Knobs

Item No.	A in	Thread Size	B in	C in	D in	Style Number	Stud Length in	Bulk Pack Qty.
KN0205004S2-S21	1.400	10-32	0.550	0.640	0.180	Style 3	0.500	1000
KN0207504S2-S21	1.400	10-32	0.550	0.640	0.180	Style 3	0.750	1000
KN4C03754S2-S21	1.400	1/4-20	0.550	0.640	0.180	Style 3	0.370	600
KN4C06254S2-S21	1.400	1/4-20	0.550	0.640	0.180	Style 3	0.630	500
KN4C12504S2-S21	1.400	1/4-20	0.550	0.640	0.180	Style 3	1.250	500
KN0207504S4-S21	1.730	10-32	0.750	0.820	0.250	Style 3	0.750	650
KN5C05004S4-S21	1.730	5/16-18	0.750	0.820	0.250	Style 3	0.500	350
KN5C07504S4-S21	1.730	5/16-18	0.750	0.820	0.250	Style 3	0.750	350
KN5C25004S4-S21	1.730	5/16-18	0.750	0.820	0.250	Style 3	2.500	200
KN4C15004S5-S21	2.000	1/4-20	0.750	0.820	0.250	Style 3	1.500	400

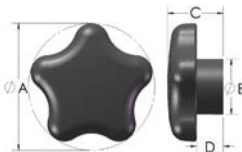
Other configurations, thread sizes, materials, and customizations available upon request.

5-STAR KNOBS

5S Series



- Specifications**
- Knob Material: Polypropylene
 - Insert Material: See Table
 - Color: Black



- Features**
- 5-Star Knobs provide maximum grip and comfort
 - Economical design for light to heavy-duty securing and clamping applications
 - Resistant to water and solvents
 - Textured finish to help hide dirt and scratches in the field
 - Impact resistant
 - Stop Nut / Lock Nut provides anti-vibration locking mechanism

Female Knobs

Item No.	A in	Thread Size	B in	C in	D in	Style Number	Thread Type	Insert Material	Plating Material	Bulk Pack Qty.
KN4C----5S2--21	1.380	1/4-20	0.860	1.150	0.700	Style 2	Free Spinning	Steel	Clear Zinc	1000
KN4C----5S2B-21	1.380	1/4-20	0.860	1.200	0.750	Style 1	Blind	Steel	Clear Zinc	500
KN4C----5S2L-21	1.380	1/4-20	0.860	1.150	0.700	Style 2	Stop Nut	Steel	Clear Zinc	1000
KN5C----5S2B-22	1.380	5/16-18	0.860	1.200	0.750	Style 1	Blind	Steel	Yellow Zinc	450
KN5C----5S2L-21	1.380	5/16-18	0.860	1.150	0.700	Style 2	Stop Nut	Steel	Clear Zinc	475
KN4C----5S3A-21	1.750	1/4-20	0.880	1.170	0.720	Style 2	Free Spinning	Steel	Clear Zinc	350
KN4C----5S3B-21	1.750	1/4-20	0.880	1.250	0.750	Style 1	Blind	Steel	Clear Zinc	350
KN4C----5S3L-21	1.750	1/4-20	0.880	1.250	0.750	Style 2	Stop Nut	Steel	Clear Zinc	600
KN5C----5S3A-21	1.750	5/16-18	0.880	1.170	0.720	Style 2	Free Spinning	Steel	Clear Zinc	350
KN5C----5S3B-22	1.750	5/16-18	0.880	1.250	0.750	Style 1	Blind	Steel	Yellow Zinc	300
KN5C----5S3L-21	1.750	5/16-18	0.880	1.250	0.750	Style 2	Stop Nut	Steel	Clear Zinc	300
KN4C----5S4--21	2.250	1/4-20	0.980	0.610	0.120	Style 2	Free Spinning	Steel	Clear Zinc	600
KN4C----5S4L-21	2.250	1/4-20	0.980	0.610	0.120	Style 2	Stop Nut	Steel	Clear Zinc	600
KN4C----5SA--21	2.250	1/4-20	0.980	1.000	0.470	Style 2	Free Spinning	Steel	Clear Zinc	500
KN4C----5SAB-21	2.250	1/4-20	0.980	1.000	0.470	Style 1	Blind	Steel	Clear Zinc	450
KN5C----5S4--21	2.250	5/16-18	0.980	0.610	0.120	Style 2	Free Spinning	Steel	Clear Zinc	600
KN5C----5SA--21	2.250	5/16-18	0.980	1.000	0.470	Style 2	Free Spinning	Steel	Clear Zinc	500
KN5C----5SAB-22	2.250	5/16-18	0.980	1.000	0.470	Style 1	Blind	Steel	Yellow Zinc	500
KN5C----5SDXW21	2.250	5/16-18	0.980	1.060	0.560	Style 2	Stop Nut	Steel	Clear Zinc	500
KN6C----5S4--21	2.250	3/8-16	0.980	0.610	0.120	Style 2	Free Spinning	Steel	Clear Zinc	600
KN6C----5SAL-21	2.250	3/8-16	0.980	1.000	0.470	Style 2	Stop Nut	Steel	Clear Zinc	500
KN6C----5SAB-21	2.250	3/8-16	0.980	1.000	0.470	Style 1	Blind	Steel	Clear Zinc	500
KN6C----5SB--21	2.250	3/8-16	0.980	0.730	0.250	Style 2	Free Spinning	Steel	Clear Zinc	575

Male Knobs

Item No.	A in	Thread Size	B in	C in	D in	Style Number	Stud Length in	Insert Material	Plating Material	Bulk Pack Qty.
KN4C05005S2--21	1.380	1/4-20	0.860	1.150	0.700	Style 3	0.500	Steel	Clear Zinc	400
KN4C10005S2--21	1.380	1/4-20	0.860	1.150	0.700	Style 3	1.000	Steel	Clear Zinc	400
KN5C15005S2--21	1.380	5/16-18	0.860	1.150	0.700	Style 3	1.500	Steel	Clear Zinc	350
KN4C05005S3--21	1.750	1/4-20	0.880	1.250	0.750	Style 3	0.500	Steel	Clear Zinc	250
KN4C07505S3--21	1.750	1/4-20	0.880	1.250	0.750	Style 3	0.750	Steel	Clear Zinc	250
KN4C10005S3--21	1.750	1/4-20	0.880	1.250	0.750	Style 3	1.000	Steel	Clear Zinc	250
KN4C15005S3--21	1.750	1/4-20	0.880	1.250	0.750	Style 3	1.500	Steel	Clear Zinc	225
KN5C10005S3A-21	1.750	5/16-18	0.880	0.990	0.490	Style 3	1.000	Steel	Clear Zinc	300
KN5C20005S3--21	1.750	5/16-18	0.880	1.250	0.750	Style 3	2.000	Steel	Clear Zinc	200
KN5C25005S3--21	1.750	5/16-18	0.880	1.250	0.750	Style 3	2.500	Steel	Clear Zinc	200
KN4C06255S4-X21	2.250	1/4-20	0.980	0.610	0.120	Style 3	0.620	Steel	Clear Zinc	500
KN4C10005S4--21	2.250	1/4-20	0.980	0.610	0.120	Style 3	1.000	Steel	Clear Zinc	500
KN4C15005S4--21	2.250	1/4-20	0.980	0.610	0.120	Style 3	1.500	Steel	Clear Zinc	400
KN4C17505S4--21	2.250	1/4-20	0.980	0.610	0.120	Style 3	1.750	Steel	Clear Zinc	400
KN5C07505S4--21	2.250	5/16-18	0.980	0.610	0.120	Style 3	0.750	Steel	Clear Zinc	500
KN5C10005S4--21	2.250	5/16-18	0.980	0.610	0.120	Style 3	1.000	Steel	Clear Zinc	500
KN5C15005S4--21	2.250	5/16-18	0.980	0.610	0.120	Style 3	1.500	Steel	Clear Zinc	500
KN5C20005SA--21	2.250	5/16-18	0.980	1.000	0.470	Style 3	2.000	Steel	Clear Zinc	350
KN5C40005SA--21	2.250	5/16-18	0.980	1.000	0.470	Style 3	4.000	Steel	Clear Zinc	250
KN6C10005S4--21	2.250	3/8-16	0.980	0.610	0.120	Style 3	1.000	Steel	Clear Zinc	450
KN6C10005SA--21	2.250	3/8-16	0.980	1.000	0.470	Style 3	1.000	Steel	Clear Zinc	400
KN6C15005S4--21	2.250	3/8-16	0.980	0.610	0.120	Style 3	1.500	Steel	Clear Zinc	400
KN6C40005SA--21	2.250	3/8-16	0.980	1.000	0.470	Style 3	4.000	Steel	Clear Zinc	250
KN8C10005SA--21	2.250	1/2-13	0.980	1.000	0.470	Style 3	1.000	Steel	Clear Zinc	130
KN8C15005SA--21	2.250	1/2-13	0.980	1.000	0.470	Style 3	1.500	Steel	Clear Zinc	120
KN8C22005SA--21	2.250	1/2-13	0.980	1.000	0.470	Style 3	2.200	Steel	Clear Zinc	100

Other configurations, thread sizes, materials, and customizations available upon request.



CUSTOM COLORS AND CUSTOMIZATIONS

Customize your plastic knobs and molded parts to fit your project needs.

www.innovative-components.com

ERGO STAR KNOBS



R Series

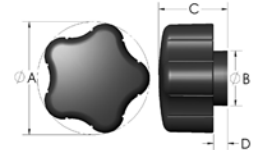


Style 1

Style 2

Specifications

- Knob Material: Polypropylene
- Insert Material: See Table
- Color: Black



Features

- Economical design for light to heavy-duty securing and clamping applications
- Textured finish to help hide dirt and scratches in the field
- Impact resistant

Female Knobs

Item No.	A in	Thread Size	B in	C in	D in	Style Number	Thread Type	Insert Material	Plating Material	Bulk Pack Qty.
KN4C----R2I-21	1.310	1/4-20	0.750	1.000	0.250	Style 2	Free Spinning	Steel	Clear Zinc	350
KN5C----R2IB-22	1.310	5/16-18	0.750	1.000	0.250	Style 1	Free Spinning	Steel	Yellow Zinc	225
KN5C----R3I-22	1.580	1/4-20	0.740	1.150	0.250	Style 2	Free Spinning	Steel	Yellow Zinc	250
KN5C----R3IB-22	1.580	5/16-18	0.740	1.150	0.250	Style 1	Free Spinning	Steel	Yellow Zinc	250
KN6C----R3IB-21	1.580	3/8-16	0.740	1.150	0.250	Style 1	Free Spinning	Steel	Clear Zinc	350
KN6C----R5I-21	1.890	3/8-16	1.000	1.220	0.250	Style 2	Free Spinning	Steel	Clear Zinc	200
KN6C----R5IB-21	1.890	3/8-16	1.000	1.220	0.250	Style 1	Free Spinning	Steel	Clear Zinc	125
KN8C----R5IB-21	1.890	1/2-13	1.000	1.220	0.250	Style 1	Free Spinning	Steel	Clear Zinc	500

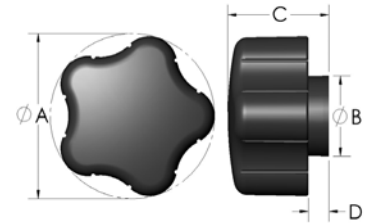
****Other configurations, thread sizes, materials, and customizations available upon request.****

R Series - Soft Touch TPE



Style 1

Style 3



Specifications

- Knob Material: TPE (Rubber) Overlay w/ Polypropylene Base
- Insert Material: See Table
- Color: Black

Features

- 5-Star Soft Touch Knobs provide maximum grip and comfort
- Economical design for light to heavy-duty securing and clamping applications
- Resistant to water and solvents
- Textured finish to help hide dirt and scratches in the field
- Impact resistant
- Polypropylene base provides stability and strength

Female Knobs

Item No.	A in	Thread Size	B in	C in	D in	Style Number	Thread Type	Insert Material	Plating Material	Bulk Pack Qty.
KN4C----R3-BS21	1.570	1/4-20	0.740	1.150	0.250	Style 1	Free Spinning	Steel	Clear Zinc	550
KN5C----R3SB-22	1.570	5/16-18	0.740	1.150	0.250	Style 1	Free Spinning	Steel	Yellow Zinc	575
KN4C----R5SB-21	1.890	1/4-20	1.000	1.170	0.180	Style 1	Free Spinning	Steel	Clear Zinc	300
KN5C----R5SB-22	1.890	5/16-18	1.000	1.170	0.180	Style 1	Free Spinning	Steel	Yellow Zinc	300
KN6C----R5SB-21	1.890	3/8-16	1.000	1.170	0.180	Style 1	Free Spinning	Steel	Clear Zinc	300
KN6C----R7SB-21	2.420	3/8-16	1.000	1.260	0.200	Style 1	Free Spinning	Steel	Clear Zinc	200
KN8C----R7-BS21	2.420	1/2-13	1.000	1.260	0.200	Style 1	Free Spinning	Steel	Clear Zinc	200

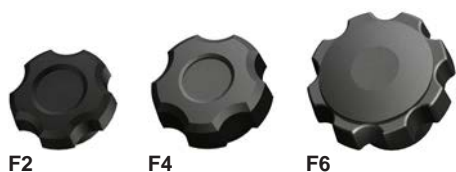
Male Knobs

Item No.	A in	Thread Size	B in	C in	D in	Style Number	Stud Length in	Insert Material	Plating Material	Bulk Pack Qty.
KN4C0500R3--S21	1.570	1/4-20	0.740	1.150	0.250	Style 3	0.500	Steel	Clear Zinc	440
KN4C0750R3--S21	1.570	1/4-20	0.740	1.150	0.250	Style 3	0.750	Steel	Clear Zinc	350
KN4C1000R3--S21	1.570	1/4-20	0.740	1.150	0.250	Style 3	1.000	Steel	Clear Zinc	384
KN5C1000R3--S21	1.570	5/16-18	0.740	1.150	0.250	Style 3	1.000	Steel	Clear Zinc	384
KN4C1000R5--S21	1.890	1/4-20	1.000	1.170	0.180	Style 3	1.000	Steel	Clear Zinc	150
KN5C1000R5--S21	1.890	5/16-18	1.000	1.170	0.180	Style 3	1.000	Steel	Clear Zinc	200
KN5C1250R5--S21	1.890	5/16-18	1.000	1.170	0.180	Style 3	1.250	Steel	Clear Zinc	200
KN5C1750R5--S21	1.890	5/16-18	1.000	1.170	0.180	Style 3	1.750	Steel	Clear Zinc	171
KN5C2000R5--S21	1.890	5/16-18	1.000	1.170	0.180	Style 3	2.000	Steel	Clear Zinc	200
KN5C2250R5--S21	1.890	5/16-18	1.000	1.170	0.180	Style 3	2.250	Steel	Clear Zinc	200
KN6C0750R5--S21	1.890	3/8-16	1.000	1.170	0.180	Style 3	0.750	Steel	Clear Zinc	200
KN6C1000R5--S21	1.890	3/8-16	1.000	1.170	0.180	Style 3	1.000	Steel	Clear Zinc	200
KN6C1250R5--S21	1.890	3/8-16	1.000	1.170	0.180	Style 3	1.250	Steel	Clear Zinc	210
KN6C2250R5--S21	1.890	3/8-16	1.000	1.170	0.180	Style 3	2.250	Steel	Clear Zinc	170
KN6C1500R7--S21	2.420	3/8-16	1.000	1.260	0.200	Style 3	1.500	Steel	Clear Zinc	135
KN6C3000R7--S21	2.420	3/8-16	1.000	1.260	0.200	Style 3	3.000	Steel	Clear Zinc	144
KN8C1250R7--S21	2.420	1/2-13	1.000	1.260	0.180	Style 3	1.250	Steel	Clear Zinc	144
KN8C1500R7--S21	2.420	3/8-16	1.000	1.260	0.200	Style 3	1.500	Steel	Clear Zinc	144

****Other configurations, thread sizes, materials, and customizations available upon request.****

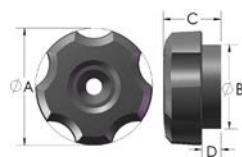
FLUTED KNOBS

F Series



Specifications

- Knob Material: Polypropylene
- Insert Material: See Table
- Color: Black



Features

- Designed with fluted perimeter for secure grip
- Economical design for light to heavy duty securing and clamping applications
- Resistant to water and solvents
- Textured finish to help hide dirt and scratches in the field
- Impact resistant

Female Knobs

Item No.	A in	Thread Size	B in	C in	D in	Style Number	Thread Type	Insert Material	Plating Material	Bulk Pack Qty.
KN04---F2-L-21	1.375	10-24	0.980	0.530	0.170	Style 2	Stop Nut	Steel	Clear Zinc	700
KN4C---F2---21	1.375	1/4-20	0.980	0.530	0.170	Style 2	Free Spinning	Steel	Clear Zinc	700
KN4C---F2-B-21	1.375	1/4-20	0.980	0.530	0.170	Style 1	Blind	Steel	Clear Zinc	700
KN4C---F2-L-21	1.375	1/4-20	0.980	0.530	0.170	Style 2	Stop Nut	Steel	Clear Zinc	750
KN5C---F2---21	1.375	5/16-18	0.980	0.530	0.170	Style 2	Free Spinning	Steel	Clear Zinc	700
KN5C---F2-B-21	1.375	5/16-18	0.980	0.530	0.170	Style 1	Blind	Steel	Clear Zinc	700
KN4C---F4---21	1.750	1/4-20	1.230	0.860	0.280	Style 2	Free Spinning	Steel	Clear Zinc	600
KN4C---F4-B-21	1.750	1/4-20	1.230	0.860	0.280	Style 1	Blind	Steel	Clear Zinc	600
KN5C---F4---21	1.750	5/16-18	1.230	0.860	0.280	Style 2	Free Spinning	Steel	Clear Zinc	600
KN5C---F4-B-22	1.750	5/16-18	1.230	0.860	0.280	Style 1	Blind	Steel	Yellow Zinc	600
KN5C---F4-L-21	1.750	5/16-18	1.230	0.860	0.280	Style 2	Stop Nut	Steel	Clear Zinc	600
KN6C---F4---21	1.750	3/8-16	1.230	0.860	0.280	Style 2	Free Spinning	Steel	Clear Zinc	600
KN4C---F6---21	2.380	1/4-20	1.250	1.230	0.620	Style 2	Free Spinning	Steel	Clear Zinc	250
KN4C---F6-B-21	2.380	1/4-20	1.250	1.230	0.620	Style 1	Blind	Steel	Clear Zinc	250
KN4C---F6-L-21	2.380	1/4-20	1.250	1.230	0.620	Style 2	Stop Nut	Steel	Clear Zinc	250
KN5C---F6---21	2.380	5/16-18	1.250	1.230	0.620	Style 2	Free Spinning	Steel	Clear Zinc	250
KN5C---F6-B-22	2.380	5/16-18	1.250	1.230	0.620	Style 1	Blind	Steel	Yellow Zinc	250
KN5C---F6-L-21	2.380	5/16-18	1.250	1.230	0.620	Style 2	Stop Nut	Steel	Clear Zinc	250
KN6C---F6---21	2.380	3/8-16	1.250	1.230	0.620	Style 2	Free Spinning	Steel	Clear Zinc	250
KN6C---F6-B-21	2.380	3/8-16	1.250	1.230	0.620	Style 1	Blind	Steel	Clear Zinc	250
KN8C---F6---21	2.380	1/2-13	1.250	1.230	0.620	Style 2	Free Spinning	Steel	Clear Zinc	250
KN8C---F6-B-21	2.380	1/2-13	1.250	1.230	0.620	Style 1	Blind	Steel	Clear Zinc	250
KN8C---F6XBL21	2.380	1/2-13	1.250	1.230	0.620	Style 1	Stop Nut	Steel	Clear Zinc	250

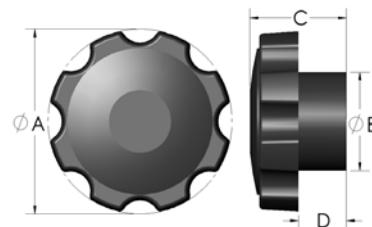
Male Knobs

Item No.	A in	Thread Size	B in	C in	D in	Style Number	Stud Length in	Insert Material	Plating Material	Bulk Pack Qty.
KN041000F2---21	1.375	10-24	0.980	0.530	0.170	Style 3	1.000	Steel	Clear Zinc	1,200
KN4C0500F2---21	1.375	1/4-20	0.980	0.530	0.170	Style 3	0.500	Steel	Clear Zinc	1,300
KN4C0625F2---21	1.375	1/4-20	0.980	0.530	0.170	Style 3	0.625	Steel	Clear Zinc	1,300
KN4C0750F2---21	1.375	1/4-20	0.980	0.530	0.170	Style 3	0.750	Steel	Clear Zinc	1,200
KN4C1000F2---21	1.375	1/4-20	0.980	0.530	0.170	Style 3	1.000	Steel	Clear Zinc	1,200
KN4C2000F2---21	1.375	1/4-20	0.980	0.530	0.170	Style 3	2.000	Steel	Clear Zinc	1,100
KN4C4250F2---21	1.375	1/4-20	0.980	0.530	0.170	Style 3	4.250	Steel	Clear Zinc	600
KN5C0750F2---21	1.375	5/16-18	0.980	0.530	0.170	Style 3	0.750	Steel	Clear Zinc	550
KN5C4750F2---21	1.375	5/16-18	0.980	0.530	0.170	Style 3	4.750	Steel	Clear Zinc	175
KN6C0875F2---21	1.375	3/8-16	0.980	0.530	0.170	Style 3	0.875	Steel	Clear Zinc	550
KN4C0750F4---21	1.750	1/4-20	1.230	0.860	0.280	Style 3	0.750	Steel	Clear Zinc	500
KN4C1000F4---21	1.750	1/4-20	1.230	0.860	0.280	Style 3	1.000	Steel	Clear Zinc	500
KN4C1750F4---21	1.750	1/4-20	1.230	0.860	0.280	Style 3	1.750	Steel	Clear Zinc	450
KN4C2000F4---21	1.750	1/4-20	1.230	0.860	0.280	Style 3	2.000	Steel	Clear Zinc	500
KN5C0750F4---21	1.750	5/16-18	1.230	0.860	0.280	Style 3	0.750	Steel	Clear Zinc	500
KN5C1000F4---21	1.750	5/16-18	1.230	0.860	0.280	Style 3	1.000	Steel	Clear Zinc	500
KN5C1250F4---21	1.750	5/16-18	1.230	0.860	0.280	Style 3	1.250	Steel	Clear Zinc	500
KN5C1500F4---21	1.750	5/16-18	1.230	0.860	0.280	Style 3	1.500	Steel	Clear Zinc	500
KN5C1750F4---21	1.750	5/16-18	1.230	0.860	0.280	Style 3	1.750	Steel	Clear Zinc	500
KN5C2000F4---21	1.750	5/16-18	1.230	0.860	0.280	Style 3	2.000	Steel	Clear Zinc	450
KN6C0500F4---21	1.750	3/8-16	1.230	0.860	0.280	Style 3	0.500	Steel	Clear Zinc	500
KN6C0750F4---21	1.750	3/8-16	1.230	0.860	0.280	Style 3	0.750	Steel	Clear Zinc	500
KN6C1000F4---21	1.750	3/8-16	1.230	0.860	0.280	Style 3	1.000	Steel	Clear Zinc	500
KN6C1250F4---21	1.750	3/8-16	1.230	0.860	0.280	Style 3	1.250	Steel	Clear Zinc	450
KN6C1500F4---21	1.750	3/8-16	1.230	0.860	0.280	Style 3	1.500	Steel	Clear Zinc	500
KN6C2250F4---21	1.750	3/8-16	1.230	0.860	0.280	Style 3	2.250	Steel	Clear Zinc	170
KN6C2500F4---21	1.750	3/8-16	1.230	0.860	0.280	Style 3	2.500	Steel	Clear Zinc	400
KN6C2875F4---21	1.750	3/8-16	1.230	0.860	0.280	Style 3	2.870	Steel	Clear Zinc	150
KN4C0750F6---21	2.380	1/4-20	1.250	1.230	0.620	Style 3	0.750	Steel	Clear Zinc	250
KN4C1000F6---21	2.380	1/4-20	1.250	1.230	0.620	Style 3	1.000	Steel	Clear Zinc	250
KN4C1750F6---21	2.380	1/4-20	1.250	1.230	0.620	Style 3	1.750	Steel	Clear Zinc	225
KN5C0500F6---21	2.380	5/16-18	1.250	1.230	0.620	Style 3	0.500	Steel	Clear Zinc	250
KN5C0750F6---21	2.380	5/16-18	1.250	1.230	0.620	Style 3	0.750	Steel	Clear Zinc	250
KN5C1000F6---21	2.380	5/16-18	1.250	1.230	0.620	Style 3	1.000	Steel	Clear Zinc	250
KN5C1750F6---21	2.380	5/16-18	1.250	1.230	0.620	Style 3	1.750	Steel	Clear Zinc	200
KN6C0500F6---21	2.380	3/8-16	1.250	1.230	0.620	Style 3	0.500	Steel	Clear Zinc	250
KN6C1000F6---21	2.380	3/8-16	1.250	1.230	0.620	Style 3	1.000	Steel	Clear Zinc	250
KN6C1500F6---21	2.380	3/8-16	1.250	1.230	0.620	Style 3	1.500	Steel	Clear Zinc	225
KN6C2000F6---21	2.380	3/8-16	1.250	1.230	0.620	Style 3	2.000	Steel	Clear Zinc	200
KN6C2250F6---21	2.380	3/8-16	1.250	1.230	0.620	Style 3	2.250	Steel	Clear Zinc	200
KN6C2500F6---21	2.380	3/8-16	1.250	1.230	0.620	Style 3	2.500	Steel	Clear Zinc	200
KN8C0500F6---21	2.380	1/2-13	1.250	1.230	0.620	Style 3	0.500	Steel	Clear Zinc	250
KN8C1250F6---21	2.380	1/2-13	1.250	1.230	0.620	Style 3	1.250	Steel	Clear Zinc	200
KN8C1500F6---21	2.380	1/2-13	1.250	1.230	0.620	Style 3	1.500	Steel	Clear Zinc	200
KN8C2000F6---21	2.380	1/2-13	1.250	1.230	0.620	Style 3	2.000	Steel	Clear Zinc	200
KN8C4000F6---21	2.380	1/2-13	1.250	1.230	0.620	Style 3	4.000	Steel	Clear Zinc	150

Other configurations, thread sizes, materials, and customizations available upon request.

FLUTED KNOBS / SHIFT KNOBS

F Series - Soft Touch TPE



Style 1

Style 2

Style 3

Specifications

- Knob Material: TPE (Rubber) Overlay w/ Polypropylene Base
- Insert Material: See Table
- Color: Black

Features

- Designed with fluted perimeter for secure grip
- Economical design for light to heavy duty securing and clamping applications
- Resistant to water and solvents
- Textured finish to help hide dirt and scratches in the field
- Impact resistant

Female Knobs

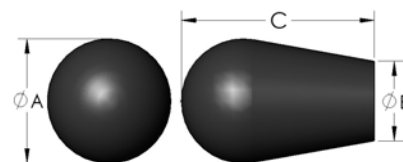
Item No.	A in	Thread Size	B in	C in	D in	Style Number	Thread Type	Insert Material	Plating Material	Bulk Pack Qty.
KN5C---F7S--21	2.500	5/16-18	1.250	1.290	0.570	Style 2	Free Spinning	Steel	Clear Zinc	200
KN5C---F7SB-22	2.500	5/16-18	1.250	1.290	0.570	Style 1	Blind	Steel	Yellow Zinc	200
KN5C---F7SBS22	2.500	5/16-18	1.250	1.290	0.570	Style 1	Blind	Steel	Yellow Zinc	200
KN6C---F7S--21	2.500	3/8-16	1.250	1.290	0.570	Style 2	Free Spinning	Steel	Clear Zinc	200
KN6C---F7SB-21	2.500	3/8-16	1.250	1.290	0.570	Style 1	Blind	Steel	Clear Zinc	200
KN8C---F7S--21	2.500	1/2-13	1.250	1.290	0.570	Style 2	Free Spinning	Steel	Clear Zinc	200
KN8C---F7SBL21	2.500	1/2-13	1.250	1.290	0.570	Style 1	Stop Nut	Steel	Clear Zinc	200

Male Knobs

Item No.	A in	Thread Size	B in	C in	D in	Style Number	Stud Length in	Insert Material	Plating Material	Bulk Pack Qty.
KN5C1750F7S--21	2.500	5/16-18	1.250	1.290	0.570	Style 3	1.750	Steel	Clear Zinc	150
KN5C2000F7S--21	2.500	5/16-18	1.250	1.290	0.570	Style 3	2.000	Steel	Clear Zinc	150
KN6C1500F7S-S21	2.500	3/8-16	1.250	1.290	0.570	Style 3	1.500	Steel	Clear Zinc	120
KN6C2000F7S--21	2.500	3/8-16	1.250	1.290	0.570	Style 3	2.000	Steel	Clear Zinc	150
KN8C1000F7S--21	2.500	1/2-13	1.250	1.290	0.570	Style 3	1.000	Steel	Clear Zinc	150
KN8C1500F7S--21	2.500	1/2-13	1.250	1.290	0.570	Style 3	1.500	Steel	Clear Zinc	150

Other configurations, thread sizes, materials, and customizations available upon request.

S Series



SD

S3 / S5

Specifications

- Knob Material: Polypropylene
- Insert Material: See Table
- Color: Black

Features

- Shift Knobs provide maximum grip and comfort
- Resistant to water and solvents
- Textured finish to help hide dirt and scratches in the field
- Impact resistant

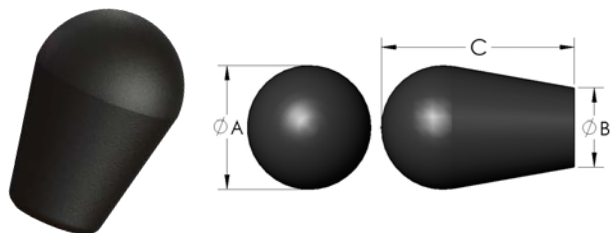
Female Knobs

Item No.	A in	Thread Size	B in	C in	Thread Type	Insert Material	Plating Material	Bulk Pack Qty.
KN6C---SD--21	1.125	3/8-16	0.560	1.440	Blind	Steel	Clear Zinc	500
KN02---S3-L-21	1.380	10-32	0.920	2.000	Stop Nut	Steel	Clear Zinc	600
KN4C---S3--21	1.380	1/4-20	0.920	2.000	Blind	Steel	Clear Zinc	400
KN5C---S3--22	1.380	5/16-18	0.920	2.000	Blind	Steel	Yellow Zinc	550
KN6C---S3--21	1.380	3/8-16	0.920	2.000	Blind	Steel	Clear Zinc	250
KN6C---S3XL-21	1.380	3/8-16	0.920	2.000	Stop Nut	Steel	Clear Zinc	500
KN8C---S3-L-21	1.380	1/2-13	0.920	2.000	Stop Nut	Steel	Clear Zinc	500
KN6C---S5--21	1.630	3/8-16	1.000	2.420	Blind	Steel	Clear Zinc	125
KN6C---S5----	1.630	3/8-16	1.000	2.420	Molded Plastic Threads	Molded Plastic	-	125
KN8C---S5--21	1.630	1/2-13	1.000	2.420	Blind	Steel	Clear Zinc	115

Other configurations, thread sizes, materials, and customizations available upon request.

SHIFT KNOBS / UNIVERSAL SHIFT KNOBS / PRESS FIT KNOBS

S Series - Soft Touch TPE



Specifications

- Knob Material: TPE (Rubber) Overlay w/ Polypropylene Base
- Insert Material: See Table
- Color: Black

Features

- Shift Knobs provide maximum grip and comfort
- Resistant to water and solvents
- Textured finish to help hide dirt and scratches in the field
- Impact resistant

Female Knobs

Item No.	A in	Thread Size	B in	C in	Thread Type	Insert Material	Plating Material	Bulk Pack Qty.
KN4C---S3--S21	1.380	1/4-20	0.920	2.000	Blind	Steel	Clear Zinc	150
KN5C---S3--S22	1.380	5/16-18	0.920	2.000	Blind	Steel	Yellow Zinc	150
KN6C---S3--S--	1.380	3/8-16	0.920	2.000	Molded Plastic Threads	Molded Plastic	-	200
KN6C---S5--S21	1.630	3/8-16	1.000	2.420	Blind	Steel	Clear Zinc	115
KN8C---S5--LS21	1.630	1/2-13	1.000	2.420	Stop Nut	Steel	Clear Zinc	125

****Other configurations, thread sizes, materials, and customizations available upon request.****

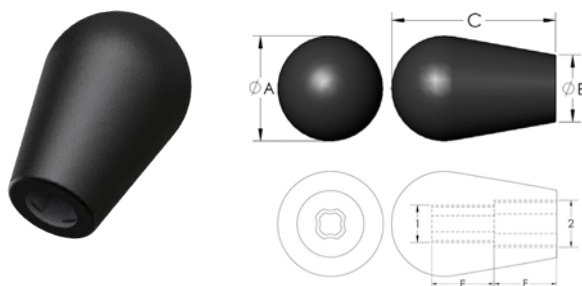
S Series - Universal

Specifications

- Knob Material: See Table
- Insert Material: See Table

Features

- Self-Tapping / Self-Threading / Cut their own threads
- Accepts Inch / Metric / Coarse / Fine threads
- When threading into the smaller diameter shaft, the stud length needs to exceed the larger diameter shaft length
- Impact Resistant
- Vibration Resistant

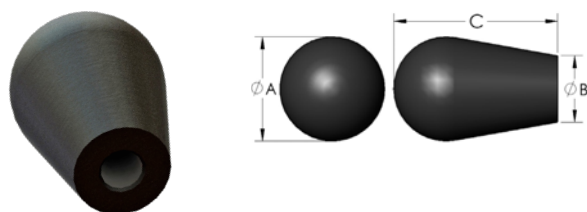


Female Knobs

Item No.	A in	Accepts Thread Diameters		B in	C in	E in	F in	Thread Type	Knob Material	Bulk Pack Qty.
		1	2							
KN4X-5X-S3---	1.380	1/4, M6	5/16, M8	0.920	2.000	0.630	0.630	Self Tapping	Polypropylene	230
KN4X-5X-S3-S--	1.380	1/4, M6	5/16, M8	0.920	2.000	0.550	0.550	Self Tapping	TPE - Soft Touch	150
KN6X-8X-S3---	1.380	3/8, M10	1/2, M12	0.920	2.000	0.720	0.720	Self Tapping	Polypropylene	230
KN6X-8X-S3-S--	1.380	3/8, M10	1/2, M12	0.920	2.000	0.500	0.500	Self Tapping	TPE - Soft Touch	150
KN6X-8X-S5---	1.630	3/8, M10	1/2, M12	1.000	2.420	0.630	0.630	Self Tapping	Polypropylene	125
KN6X-8X-S5-S--	1.630	3/8, M10	1/2, M12	1.000	2.420	0.750	0.880	Self Tapping	TPE - Soft Touch	125

****Other configurations, thread sizes, materials, and customizations available upon request.****

S Series - Press-Fit Suction



Specifications

- Knob Material: TPE (Rubber)
- Insert Material: See Table
- Color: Black

Features

- Smooth unthreaded hole w/ suction grip
- Reduces installation time
- Soft Touch Knobs provide maximum grip and comfort
- Textured finish to help hide dirt and scratches in the field

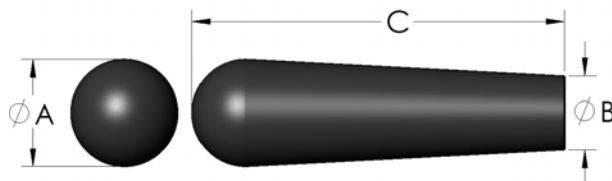
Female Knobs

Item No.	A in	Accepts Unthreaded Shafts	B in	C in	Thread Type	Knob Material	Bulk Pack Qty.
KN6X--PFS3-S--	1.380	3/8	0.920	2.000	Suction Grip / Smooth Hole	TPE - Soft Touch	200
KN6X--PFS5-S--	1.630	3/8	1.000	2.420	Suction Grip / Smooth Hole	TPE - Soft Touch	125
KN8X--PFS5-S--	1.630	1/2	1.000	2.420	Suction Grip / Smooth Hole	TPE - Soft Touch	125

****Other configurations, thread sizes, materials, and customizations available upon request.****

LONG TAPERED KNOBS / PULL KNOBS

LT Series



Specifications

- Knob Material: Polypropylene
- Insert Material: See Table
- Color: Black

Features

- Economical design for light to medium duty securing and clamping applications
- Resistant to water and solvents
- Textured finish to help hide dirt and scratches in the field
- Impact resistant

Female Knobs

Item No.	A in	Thread Size	B in	C in	Thread Type	Insert Material	Plating Material	Bulk Pack Qty.
KN4C---L2--21	1.110	1/4-20	0.760	3.850	Blind	Steel	Clear Zinc	140
KN5C---L2--22	1.110	5/16-18	0.760	3.850	Blind	Steel	Yellow Zinc	140
KN6C---L2--21	1.110	3/8-16	0.760	3.850	Blind	Steel	Clear Zinc	140
KN8C---L2--21	1.110	1/2-13	0.760	3.850	Blind	Steel	Clear Zinc	140

Other configurations, thread sizes, materials, and customizations available upon request.

PL Series

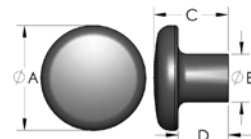


PL4

PL5

Specifications

- Knob Material: Polypropylene
- Insert Material: See Table
- Color: Black



Features

- Economical design for light to medium duty securing and clamping applications
- Resistant to water and solvents
- Textured finish to help hide dirt and scratches in the field
- Impact resistant

Female Knobs

Item No.	A in	Thread Size	B in	C in	D in	Thread Type	Insert Material	Plating Material	Bulk Pack Qty.
KN04---PL4L-21	1.000	10-24	0.530	0.930	0.680	Stop Nut	Steel	Clear Zinc	1200
KN4C---PL4L-21	1.000	1/4-20	0.530	0.930	0.680	Stop Nut	Steel	Clear Zinc	1200
KN4C---PL5--21	1.600	1/4-20	0.750	1.160	0.780	Blind	Steel	Clear Zinc	350
KN5C---PL5--22	1.600	5/16-18	0.750	1.160	0.780	Blind	Steel	Yellow Zinc	350
KN6C---PL5--21	1.600	3/8-16	0.750	1.160	0.780	Blind	Steel	Clear Zinc	350

Other configurations, thread sizes, materials, and customizations available upon request.

TRY BEFORE YOU BUY!

Thousands of options for feet, casters and glides available from Innovative.

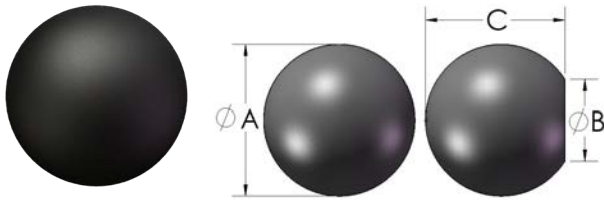
Order your FREE samples today.

Complete your project with levels, bumpers, casters and vibration mounts from Innovative.

Contact sales@knobsources.com for information on our complete line.

BALL KNOBS

B Series



Specifications

- Knob Material: Polypropylene
- Insert Material: See Table
- Color: Black

Features

- Textured finish to help hide dirt and scratches in the field
- Resistant to water and solvents
- Impact resistant

Female Knobs

Item No.	A in	Thread Size	B in	C in	Thread Type	Insert Material	Plating Material	Bulk Pack Qty.
KN02---B0---90	0.750	10-32	0.370	0.700	Blind	Brass	Plain	1000
KN4C---B0-L-21	0.750	1/4-20	0.370	0.700	Stop Nut	Steel	Clear Zinc	2000
KN82---B0---22	0.750	8-32	0.370	0.700	Blind	Steel	Yellow Zinc	2000
KN04---B1-L-21	1.000	10-24	0.620	0.880	Stop Nut	Steel	Clear Zinc	800
KN4C---B1-L-21	1.000	1/4-20	0.620	0.880	Stop Nut	Steel	Clear Zinc	900
KN5C---B1-L-21	1.000	5/16-18	0.620	0.880	Stop Nut	Steel	Clear Zinc	900
KN6C---B1-L-21	1.000	3/8-16	0.620	0.880	Stop Nut	Steel	Clear Zinc	800
KN04---B2-L-21	1.250	10-24	0.620	1.150	Stop Nut	Steel	Clear Zinc	450
KN4C---B2---21	1.250	1/4-20	0.620	1.150	Blind	Steel	Yellow Zinc	450
KN5C---B2---22	1.250	5/16-18	0.620	1.150	Blind	Steel	Yellow Zinc	450
KN5C---B2-L-21	1.250	5/16-18	0.620	1.150	Stop Nut	Steel	Clear Zinc	450
KN6C---B2---21	1.250	3/8-16	0.620	1.150	Blind	Steel	Clear Zinc	450
KNM10---B2---21	1.250	M10x1.5	0.620	1.150	Blind	Steel	Clear Zinc	450
KNM6---B2---22	1.250	M6x1.0	0.620	1.150	Blind	Steel	Yellow Zinc	450
KNM8---B2---21	1.250	M8x1.25	0.620	1.150	Blind	Steel	Clear Zinc	450
KN4C---B3---21	1.380	1/4-20	0.750	1.280	Blind	Steel	Clear Zinc	300
KN5C---B3---22	1.380	5/16-18	0.750	1.280	Blind	Steel	Yellow Zinc	300
KN6C---B3---21	1.380	3/8-16	0.750	1.280	Blind	Steel	Clear Zinc	300
KN8C---B3-L-21	1.380	1/2-13	0.750	1.280	Stop Nut	Steel	Clear Zinc	300
KNM10---B3---21	1.380	M10x1.5	0.750	1.280	Blind	Steel	Clear Zinc	300
KNM6---B3---22	1.380	M6x1.0	0.750	1.280	Blind	Steel	Yellow Zinc	300
KNM8---B3---21	1.380	M8x1.25	0.750	1.280	Blind	Steel	Clear Zinc	300
KN4C---B4---21	1.470	1/4-20	0.750	1.400	Blind	Steel	Clear Zinc	250
KN5C---B4---22	1.470	5/16-18	0.750	1.400	Blind	Steel	Yellow Zinc	250
KN6C---B4---21	1.470	3/8-16	0.750	1.400	Blind	Steel	Clear Zinc	250
KN6C---B4-L-21	1.470	3/8-16	0.750	1.400	Stop Nut	Steel	Clear Zinc	250
KN8C---B4-L-21	1.470	1/2-13	0.750	1.400	Stop Nut	Steel	Clear Zinc	250
KNM10---B4-L-21	1.470	M10x1.5	0.750	1.400	Stop Nut	Steel	Clear Zinc	250
KNM6---B4---22	1.470	M6x1.0	0.750	1.400	Blind	Steel	Yellow Zinc	250
KNM8---B4---21	1.470	M8x1.25	0.750	1.400	Blind	Steel	Clear Zinc	250
KN1C---B5-L-21	1.610	5/8-11	0.750	1.520	Stop Nut	Steel	Clear Zinc	200
KN4C---B5---21	1.610	1/4-20	0.750	1.520	Blind	Steel	Clear Zinc	200
KN5C---B5---22	1.610	5/16-18	0.750	1.520	Blind	Steel	Yellow Zinc	200
KN6C---B5-L-21	1.610	3/8-16	0.750	1.520	Stop Nut	Steel	Clear Zinc	200
KN8C---B5-L-21	1.610	1/2-13	0.750	1.520	Stop Nut	Steel	Clear Zinc	200
KNM10---B5---21	1.610	M10x1.5	0.750	1.520	Blind	Steel	Clear Zinc	200
KNM6---B5---22	1.610	M6x1.0	0.750	1.520	Blind	Steel	Yellow Zinc	200
KNM8---B5---21	1.610	M8x1.25	0.750	1.520	Blind	Steel	Clear Zinc	200
KN1C---B7-L-21	1.880	5/8-11	1.000	1.750	Stop Nut	Steel	Clear Zinc	125
KN4C---B7---21	1.880	1/4-20	1.000	1.750	Blind	Steel	Clear Zinc	125
KN5C---B7---22	1.880	5/16-18	1.000	1.750	Blind	Steel	Yellow Zinc	125
KN6C---B7---21	1.880	3/8-16	1.000	1.750	Blind	Steel	Clear Zinc	125
KN8C---B7-L-21	1.880	1/2-13	1.000	1.750	Stop Nut	Steel	Clear Zinc	125
KNM10---B7---21	1.880	M10x1.5	1.000	1.750	Blind	Steel	Clear Zinc	125
KNM6---B7---22	1.880	M6x1.0	1.000	1.750	Blind	Steel	Yellow Zinc	125
KNM8---B7---21	1.880	M8x1.25	1.000	1.750	Blind	Steel	Clear Zinc	125

****Other configurations, thread sizes, materials, and customizations available upon request.****

3"
to
59"

CABLE TIES

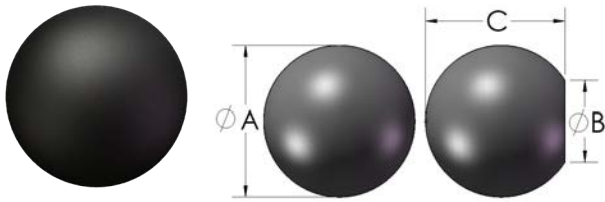
**Millions
In Stock
Ready for
Same Day
Shipping**

Call or e-mail to request FREE samples!



BALL KNOBS / UNIVERSAL BALL KNOBS

B Series - Soft Touch TPE



Specifications

- Knob Material: TPE (Rubber) Overlay w/ Polypropylene Base
- Insert Material: See Table
- Color: Black

Features

- Soft Touch TPE Overmold provides a comfortable grip
- Impact resistant
- Polypropylene base provides stability and strength

Female Knobs

Item No.	A in	Thread Size	B in	C in	Thread Type	Insert Material	Plating Material	Bulk Pack Qty.
KN04----B1S--90	1.000	10-24	0.620	0.880	Blind	Brass	Plain	800
KN4C----B1SL-21	1.000	1/4-20	0.620	0.880	Stop Nut	Steel	Clear Zinc	900
KN82----B1S--22	1.000	8-32	0.620	0.880	Blind	Steel	Yellow Zinc	800
KN04----B2SL-21	1.250	10-24	0.620	1.150	Stop Nut	Steel	Clear Zinc	400
KN4C----B2S--21	1.250	1/4-20	0.620	1.150	Blind	Steel	Clear Zinc	400
KN5C----B2S--22	1.250	5/16-18	0.620	1.150	Blind	Steel	Yellow Zinc	400
KN6C----B2S--21	1.250	3/8-16	0.620	1.150	Blind	Steel	Clear Zinc	400
KN4C----B3S--21	1.380	1/4-20	0.750	1.280	Blind	Steel	Clear Zinc	250
KN5C----B3S--22	1.380	5/16-18	0.750	1.280	Blind	Steel	Yellow Zinc	300
KN6C----B3S--21	1.380	3/8-16	0.750	1.280	Blind	Steel	Clear Zinc	300
KN8C----B3S--21	1.380	1/2-13	0.750	1.280	Blind	Steel	Clear Zinc	250
KN4C----B4S--21	1.470	1/4-20	0.750	1.400	Blind	Steel	Clear Zinc	200
KN5C----B4S--22	1.470	5/16-18	0.750	1.400	Blind	Steel	Yellow Zinc	250
KN6C----B4S--21	1.470	3/8-16	0.750	1.400	Blind	Steel	Clear Zinc	200
KN8C----B4SL-21	1.470	1/2-13	0.750	1.400	Stop Nut	Steel	Clear Zinc	200
KN5C----B5S--22	1.610	5/16-18	0.750	1.520	Blind	Steel	Yellow Zinc	200
KN6C----B5S--21	1.610	3/8-16	0.750	1.520	Blind	Steel	Clear Zinc	150
KN8C----B5SL-21	1.610	1/2-13	0.750	1.520	Stop Nut	Steel	Clear Zinc	200
KN1C----B7SL-21	1.880	5/8-11	1.000	1.750	Stop Nut	Steel	Clear Zinc	115
KN6C----B7SL-21	1.880	3/8-16	1.000	1.750	Stop Nut	Steel	Clear Zinc	115
KN8C----B7SL-21	1.880	1/2-13	1.000	1.750	Stop Nut	Steel	Clear Zinc	115

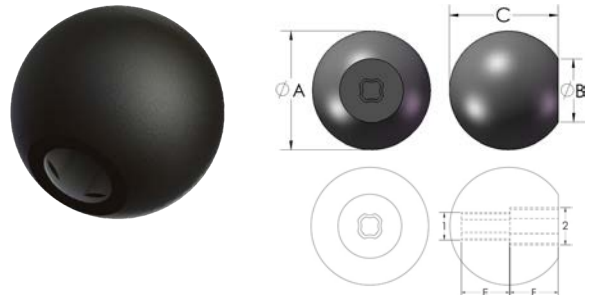
B Series - Universal

Specifications

- Knob Material: See Table
- Insert Material: N/A
- Color: Black; *Exception KN6X-8X-B5--R-- is Red*

Features

- Self-Tapping / Self-Threading / Cut their own threads
- Accepts Inch / Metric / Coarse / Fine threads
- When threading into the smaller diameter shaft, the stud length needs to exceed the larger diameter shaft length
- Impact resistant
- Vibration resistant



Female Knobs

Item No.	A in	Accepts Thread Diameters		B in	C in	E in	F in	Thread Type	Knob Material	Bulk Pack Qty.
		1	2							
KN4X-5X-B3-----	1.380	1/4, M6	5/15, M8	0.750	1.280	0.500	0.500	Self Tapping	Polypropylene	300
KN4X-5X-B4--S--	1.500	1/4, M6	5/15, M8	0.750	1.380	0.550	0.550	Self Tapping	TPE - Soft Touch	200
KN5X-6X-B4-----	1.500	5/16, M8	3/8, M10	0.750	1.380	0.630	0.630	Self Tapping	Polypropylene	250
KN5X-6X-B5--S--	1.630	5/16, M8	3/8, M10	0.750	1.500	0.550	0.630	Self Tapping	TPE - Soft Touch	200
KN6X-8X-B5-----	1.630	3/8, M10	1/2, M12	0.750	1.500	0.630	0.630	Self Tapping	Polypropylene	200
KN6X-8X-B5--R--	1.630	3/8, M10	1/2, M12	0.750	1.500	0.630	0.630	Self Tapping	Red Polypropylene	200
KN6X-8X-B7--S--	1.880	3/8, M10	1/2, M12	1.000	1.750	0.630	0.630	Self Tapping	TPE - Soft Touch	125
KN8X-1X-B7-----	1.880	1/2, M12	5/8	1.000	1.750	0.630	0.630	Self Tapping	Polypropylene	125
KN8X-1X-B7--S--	1.880	1/2, M12	5/8	1.000	1.750	0.630	0.630	Self Tapping	TPE - Soft Touch	100

Other configurations, thread sizes, materials, and customizations available upon request.



IT'S SIMPLE:

JUST SAMPLE!

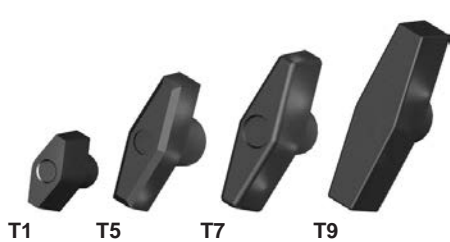
Over 5,000 caps and plugs in stock. Order your FREE samples today.

Our extensive range of caps and plugs provides thousands of solutions for protecting vital components during shipment, storage and finishing processes. Contact sales@knobsources.com for more information!



T-KNOBS

T Series



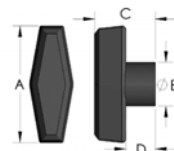
Style 1

Style 2

Style 3

Specifications

- Knob Material: See Table
- Insert Material: See Table
- Color: Black



Features

- T-Knobs provide maximum grip and comfort
- Resistant to water and solvents
- Impact resistant

Female Knobs

Item No.	A in	Thread Size	B in	C in	D in	Style Number	Thread Type	Insert Material	Plating Material	Knob Material	Bulk Pack Qty.
KN04----T1A--21	1.160	10-24	0.500	0.940	0.390	Style 2	Free Spinning	Steel	Clear Zinc	Polypropylene	3500
KN04----T1AB-90	1.160	10-24	0.500	0.670	0.120	Style 1	Blind	Brass	Plain	Polypropylene	3500
KN4C----T1--21	1.160	1/4-20	0.500	0.940	0.390	Style 2	Free Spinning	Steel	Clear Zinc	Polypropylene	1300
KN4C----T1A--21	1.160	1/4-20	0.500	0.670	0.120	Style 2	Free Spinning	Steel	Clear Zinc	Polypropylene	3500
KN4C----T1AB-21	1.160	1/4-20	0.500	0.670	0.120	Style 1	Blind	Steel	Clear Zinc	Polypropylene	2000
KN4C----T1-B-21	1.160	1/4-20	0.500	0.940	0.390	Style 1	Blind	Steel	Clear Zinc	Polypropylene	1300
KN4C----T1D-N--	1.160	1/4-20	0.480	0.980	0.420	Style 2	Molded Plastic Threads	Molded Plastic	-	Nylon	3500
KN5C----T1--22	1.160	5/16-18	0.500	0.940	0.390	Style 2	Free Spinning	Steel	Yellow Zinc	Polypropylene	1300
KN5C----T1--L22	1.160	5/16-18	0.500	0.940	0.390	Style 2	Stop Nut	Steel	Yellow Zinc	Polypropylene	1300
KN4C----T5--21	2.000	1/4-20	0.750	1.040	0.490	Style 2	Free Spinning	Steel	Clear Zinc	Polypropylene	1200
KN4C----T5-B-21	2.000	1/4-20	0.750	1.040	0.490	Style 1	Blind	Steel	Clear Zinc	Polypropylene	550
KN4C----T5-LN21	2.000	1/4-20	0.750	1.040	0.490	Style 2	Stop Nut	Steel	Clear Zinc	Nylon	1200
KN5C----T5--21	2.000	5/16-18	0.750	1.040	0.490	Style 2	Free Spinning	Steel	Clear Zinc	Polypropylene	1200
KN5C----T5-B-22	2.000	5/16-18	0.750	1.040	0.490	Style 1	Blind	Steel	Yellow Zinc	Polypropylene	1200
KN5C----T5-LN21	2.000	5/16-18	0.750	1.040	0.490	Style 2	Stop Nut	Steel	Clear Zinc	Nylon	1200
KN6C----T5--21	2.000	3/8-16	0.750	1.040	0.490	Style 2	Free Spinning	Steel	Clear Zinc	Polypropylene	1200
KN6C----T5-B-21	2.000	3/8-16	0.750	1.040	0.490	Style 1	Blind	Steel	Clear Zinc	Polypropylene	1200
KN6C----T5-L-21	2.000	3/8-16	0.750	1.040	0.490	Style 2	Stop Nut	Steel	Clear Zinc	Polypropylene	1200
KN4C----T7--21	2.500	1/4-20	0.750	1.110	0.460	Style 2	Free Spinning	Steel	Clear Zinc	Polypropylene	800
KN5C----T7--21	2.500	5/16-18	0.750	1.110	0.460	Style 2	Free Spinning	Steel	Clear Zinc	Polypropylene	800
KN5C----T7-B-22	2.500	5/16-18	0.750	1.110	0.460	Style 1	Blind	Steel	Yellow Zinc	Polypropylene	800
KN4C----T7--21	2.500	1/4-20	0.750	1.110	0.460	Style 2	Free Spinning	Steel	Clear Zinc	Polypropylene	800
KN5C----T7-LN21	2.500	5/16-18	0.750	1.110	0.460	Style 2	Stop Nut	Steel	Clear Zinc	Nylon	800
KN6C----T7--21	2.500	3/8-16	0.750	1.110	0.460	Style 2	Free Spinning	Steel	Clear Zinc	Polypropylene	800
KN6C----T7-B-21	2.500	3/8-16	0.750	1.110	0.460	Style 1	Blind	Steel	Clear Zinc	Polypropylene	800
KN6C----T9-B-21	3.500	3/8-16	0.970	1.130	0.270	Style 1	Blind	Steel	Clear Zinc	Polypropylene	400
KN8C----T9-BN21	3.500	1/2-13	0.970	1.130	0.270	Style 1	Blind	Steel	Clear Zinc	Nylon	400

Male Knobs

Item No.	A in	Thread Size	B in	C in	D in	Style Number	Stud Length in	Insert Material	Plating Material	Knob Material	Bulk Pack Qty.
KN020500T1--21	1.120	10-32	0.500	0.940	0.390	Style 3	0.500	Steel	Clear Zinc	Polypropylene	1300
KN040500T1--21	1.120	10-24	0.500	0.940	0.390	Style 3	0.500	Steel	Clear Zinc	Polypropylene	1000
KN040750T1--21	1.120	10-24	0.500	0.940	0.390	Style 3	0.750	Steel	Clear Zinc	Polypropylene	1000
KN4C0500T1--21	1.120	1/4-20	0.500	0.940	0.390	Style 3	0.500	Steel	Clear Zinc	Polypropylene	1200
KN4C0750T1--21	1.120	1/4-20	0.500	0.940	0.390	Style 3	0.750	Steel	Clear Zinc	Polypropylene	1000
KN4C1000T1--21	1.120	1/4-20	0.500	0.940	0.390	Style 3	1.000	Steel	Clear Zinc	Polypropylene	1000
KN4C0500T1A--21	1.120	1/4-20	0.500	0.670	0.120	Style 3	0.500	Steel	Clear Zinc	Polypropylene	1200
KN4C0750T5--21	2.000	1/4-20	0.750	1.040	0.490	Style 3	0.750	Steel	Clear Zinc	Polypropylene	1000
KN4C1000T5--21	2.000	1/4-20	0.750	1.040	0.490	Style 3	1.000	Steel	Clear Zinc	Polypropylene	1000
KN4C1500T5--21	2.000	1/4-20	0.750	1.040	0.490	Style 3	1.500	Steel	Clear Zinc	Polypropylene	850
KN4C2000T5--21	2.000	1/4-20	0.750	1.040	0.490	Style 3	2.000	Steel	Clear Zinc	Polypropylene	800
KN5C0750T5--21	2.000	5/16-18	0.750	1.040	0.490	Style 3	0.750	Steel	Clear Zinc	Polypropylene	400
KN5C1000T5--21	2.000	5/16-18	0.750	1.040	0.490	Style 3	1.000	Steel	Clear Zinc	Polypropylene	400
KN5C1500T5--21	2.000	5/16-18	0.750	1.040	0.490	Style 3	1.500	Steel	Clear Zinc	Polypropylene	600
KN5C2000T5--21	2.000	5/16-18	0.750	1.040	0.490	Style 3	2.000	Steel	Clear Zinc	Polypropylene	500
KN6C1000T5--21	2.000	3/8-16	0.750	1.040	0.490	Style 3	1.000	Steel	Clear Zinc	Polypropylene	350
KN6C1500T5--21	2.000	3/8-16	0.750	1.040	0.490	Style 3	1.500	Steel	Clear Zinc	Polypropylene	400
KN5C1250T7--21	2.500	5/16-18	0.750	1.110	0.460	Style 3	1.250	Steel	Clear Zinc	Polypropylene	700
KN5C2000T7--21	2.500	5/16-18	0.750	1.110	0.460	Style 3	2.000	Steel	Clear Zinc	Polypropylene	550
KN6C0750T7--21	2.500	3/8-16	0.750	1.110	0.460	Style 3	0.750	Steel	Clear Zinc	Polypropylene	600

Other configurations, thread sizes, materials, and customizations available upon request.

FREE SAMPLES

For information on our full range of Masking Solutions, call (800) 566-2774

MASKING PLUGS

Temperature protection up to **600°F**

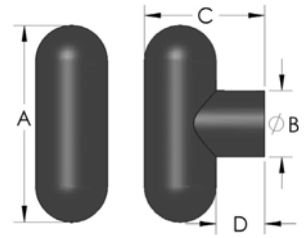
ROUNDED T-KNOBS / MINI T-KNOBS

T Series



Style 1

Style 3



Specifications

- Knob Material: Polypropylene
- Insert Material: Steel - Clear Zinc
- Color: Black

Features

- Economical design for light to heavy-duty securing and clamping applications
- Resistant to water and solvents
- Textured finish to help hide dirt and scratches in the field
- Impact resistant

Female Knobs

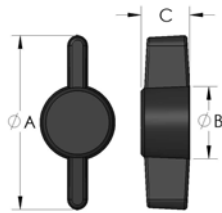
Item No.	A in	Thread Size	B in	C in	D in	Style Number	Thread Type	Insert Material	Plating Material	Bulk Pack Qty.
KN4C---TR6--21	2.250	1/4-20	0.770	1.410	0.570	Style 1	Blind	Steel	Clear Zinc	600
KN5C---TR6--22	2.250	5/16-18	0.770	1.410	0.570	Style 1	Blind	Steel	Clear Zinc	600
KN6C---TR6--21	2.250	3/8-16	0.770	1.410	0.570	Style 1	Blind	Steel	Clear Zinc	600

Male Knobs

Item No.	A in	Thread Size	B in	C in	D in	Style Number	Stud Length in	Insert Material	Plating Material	Bulk Pack Qty.
KN5C0750TR6--21	2.250	5/16-18	0.770	1.410	0.570	Style 3	0.750	Steel	Clear Zinc	500
KN6C0500TR6--21	2.250	3/8-16	0.770	1.410	0.570	Style 3	0.500	Steel	Clear Zinc	300
KN6C1000TR6--21	2.250	3/8-16	0.770	1.410	0.570	Style 3	1.000	Steel	Clear Zinc	225

Other configurations, thread sizes, materials, and customizations available upon request.

T Series



Specifications

- Knob Material: Nylon
- Insert Material: Stainless Steel
- Color: Black

Features

- Economical design for light duty securing and clamping applications
- Resistant to water and solvents
- Small diameter ideal for tight clearance spaces
- Impact resistant

Male Knobs

Item No.	A in	Thread Size	B in	C in	Style Number	Stud Length in	Insert Material	Plating Material	Bulk Pack Qty.
KN020875T2--N70	1.250	10-32	0.540	0.350	Style 3	0.870	Stainless Steel	Plain	2000
KN021125T2--N70	1.250	10-32	0.540	0.350	Style 3	1.120	Stainless Steel	Plain	2000

Other configurations, thread sizes, materials, and customizations available upon request.

FIBER, WIRE & CABLE MANAGEMENT

Free Samples Available! Call Today.

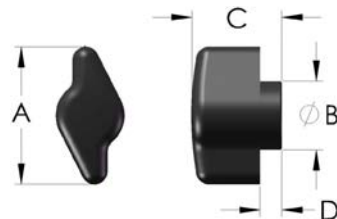
HURRICANE T-KNOBS / T-WING KNOB / KS SERIES

T Series



Style 2

Style 3



Specifications

- Knob Material: Polypropylene
- Insert Material: See Table
- Color: Black

Features

- Economical design for light duty securing and clamping applications
- Resistant to water and solvents
- Small diameter ideal for tight clearance spaces
- Impact resistant

Female Knobs

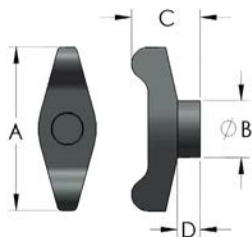
Item No.	A in	Thread Size	B in	C in	D in	Style Number	Type	Insert Material	Plating Material	Bulk Pack Qty.
KN5C---TH1--22	1.260	5/16-18	0.630	0.830	0.200	Style 2	Free Spinning	Steel	Yellow Zinc	1200

Male Knobs

Item No.	A in	Thread Size	B in	C in	D in	Style Number	Stud Length in	Insert Material	Plating Material	Bulk Pack Qty.
KN042000TH1--21	1.260	10-24	0.630	0.830	0.200	Style 3	2.000	Steel	Clear Zinc	800
KN4C1250TH1--21	1.260	1/4-20	0.630	0.830	0.200	Style 3	1.250	Steel	Clear Zinc	1200

Other configurations, thread sizes, materials, and customizations available upon request.

T-Series



Specifications

- Knob Material: See Table
- Insert Material: Steel - Clear Zinc
- Color: Black

Features

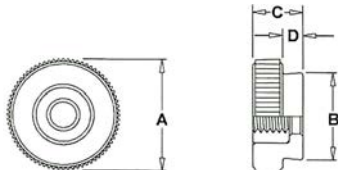
- T-Knobs provide maximum grip and comfort
- Economical design for light to heavy duty securing and clamping applications
- Resistant to water and solvents
- Textured finish to help hide dirt and scratches in the field
- Impact resistant

Female Knobs

Item No.	A in	Thread Size	B in	C in	D in	Thread Type	Knob Material	Bulk Pack Qty.
KN5C---TW7--21	2.500	5/16-18	0.860	1.100	0.370	Free Spinning	Polypropylene	950
KN5C---TW7LX21	2.500	5/16-18	0.860	1.100	0.370	Stop Nut	20% Talc Filled PP	950

Other configurations, thread sizes, materials, and customizations available upon request.

KS Series



Specifications

- Knob Material: Acetal
- Insert Material: Aluminum
- Color: Black

Features

- Knurled rim for easy gripping
- Economical design for light securing and clamping applications
- Textured finish to help hide dirt and scratches in the field

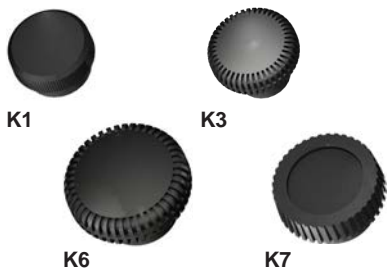
Female Knobs

Item No.	A in	Accepts Thread Diameters	B in	C in	D in
KS40---N1--5A0	0.313	4-40	0.280	0.190	0.060
KS62---N2--5A0	0.375	6-32	0.360	0.230	0.060
KS82---N3--5A0	0.500	8-32	0.410	0.250	0.070
KS04---N4--5A0	0.625	10-24	0.420	0.250	0.080
KS4C---N5--5A0	0.750	1/4-20	0.500	0.310	0.140
KS4C---N6--5A0	1.000	1/4-20	0.590	0.410	0.140
KS5C---N6--5A0	1.000	5/16-18	0.590	0.410	0.140
KSM3---N2--5A0	0.375	M3	0.360	0.230	0.060
KSM4---N3--5A0	0.500	M4	0.410	0.250	0.070
KSM5---N4--5A0	0.625	M5	0.420	0.250	0.080
KSM6---N5--5A0	0.750	M6	0.500	0.310	0.140
KSM8---N6--5A0	1.000	M8	0.590	0.410	0.140

Other configurations, thread sizes, materials, and customizations available upon request.

KNURLED KNOBS / GRIP KNOBS

K Series

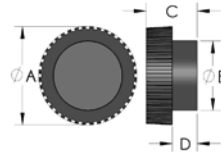


Style 1

Style 3

Specifications

- Knob Material: See Table
- Insert Material: See Table
- Color: Black



Features

- Knurled rim for easy gripping
- Economical design for light securing and clamping applications
- Resistant to water and solvents
- Textured finish to help hide dirt and scratches in the field
- Impact resistant

Female Knobs

Item No.	A in	Thread Size	B in	C in	D in	Style Number	Thread Type	Insert Material	Plating Material	Knob Material	Bulk Pack Qty.
KN02----K7-L-21	0.750	10-32	0.500	0.500	0.280	Style 1	Stop Nut	Steel	Clear Zinc	Polypropylene	2500
KN04----K7-L-21	0.750	10-24	0.500	0.500	0.280	Style 1	Stop Nut	Steel	Clear Zinc	Polypropylene	2500
KN04----K7--2R	0.750	10-24	0.500	0.500	0.280	Style 1	Blind	Steel	Clear Zinc	Polypropylene	2500
KN02----K3-LN21	0.750	10-32	0.500	0.480	0.170	Style 1	Stop Nut	Steel	Clear Zinc	Nylon	2500
KN04----K3-LN21	0.750	10-24	0.500	0.480	0.170	Style 1	Stop Nut	Steel	Clear Zinc	Nylon	2500
KN02----K6D-A21	1.000	10-32	0.630	0.580	0.170	Style 1	Blind	Steel	Clear Zinc	ABS	1500
KN04----K6DBN21	1.000	10-24	0.630	0.580	0.170	Style 1	Blind	Steel	Clear Zinc	Nylon	1400
KN4C----K6DBN21	1.000	1/4-20	0.630	0.580	0.170	Style 1	Blind	Steel	Clear Zinc	Nylon	1400
KN4C----K6DBN-R	1.000	1/4-20	0.630	0.580	0.170	Style 1	Molded Plastic Threads	Molded Plastic	-	Nylon	1400
KN5C----K6DBN21	1.000	5/16-18	0.630	0.580	0.170	Style 1	Stop Nut	Steel	Clear Zinc	Nylon	1400
KN82----K6D--22	1.000	8-32	0.630	0.580	0.170	Style 1	Blind	Steel	Yellow Zinc	Polypropylene	1200

Male Knobs

Item No.	A in	Thread Size	B in	C in	D in	Style Number	Stud Length in	Insert Material	Plating Material	Knob Material	Bulk Pack Qty.
KN820625K1--N22	0.630	8-32	0.500	0.360	0.170	Style 3	0.625	Steel	Yellow Zinc	Nylon	3500
KN020250K1--21	0.630	10-32	0.500	0.360	0.170	Style 3	0.250	Steel	Clear Zinc	Polypropylene	3000
KN820250K7--2R	0.750	8-32	0.500	0.500	0.280	Style 3	0.250	Steel	Clear Zinc	Polypropylene	2500
KN040500K7--2R	0.750	10-24	0.500	0.500	0.280	Style 3	0.500	Steel	Clear Zinc	Polypropylene	2000
KN4C0375K7--21	0.750	1/4-20	0.500	0.500	0.280	Style 3	0.375	Steel	Clear Zinc	Polypropylene	3000
KN4C0500K7--21	0.750	1/4-20	0.500	0.500	0.280	Style 3	0.500	Steel	Clear Zinc	Polypropylene	2000
KN820625K3--N21	0.750	8-32	0.500	0.480	0.170	Style 3	0.625	Steel	Clear Zinc	Nylon	2000
KN040625K3--N21	0.750	10-24	0.500	0.480	0.170	Style 3	0.625	Steel	Clear Zinc	Nylon	2000
KN4C0500K3--N21	0.750	1/4-20	0.500	0.480	0.170	Style 3	0.500	Steel	Clear Zinc	Nylon	2500
KN4C1000K3--N21	0.750	1/4-20	0.500	0.480	0.170	Style 3	1.000	Steel	Clear Zinc	Nylon	2000
KN4C1625K3--N21	0.750	1/4-20	0.500	0.480	0.170	Style 3	1.620	Steel	Clear Zinc	Nylon	1500
KN020500K6--N2R	1.000	10-32	0.630	0.500	0.090	Style 3	0.500	Steel	Clear Zinc	Nylon	1400
KN020750K6--21	1.000	10-32	0.630	0.500	0.090	Style 3	0.750	Steel	Clear Zinc	Polypropylene	1200
KN020750K6C-N21	1.000	10-32	0.630	0.810	0.400	Style 3	0.750	Steel	Clear Zinc	Nylon	1000
KN021250K6D-A21	1.000	10-32	0.630	0.580	0.170	Style 3	1.250	Steel	Clear Zinc	ABS	1400
KN040750K6--21	1.000	10-24	0.630	0.500	0.090	Style 3	0.750	Steel	Clear Zinc	Polypropylene	1400
KN4C0375K6--A21	1.000	1/4-20	0.630	0.500	0.090	Style 3	0.370	Steel	Clear Zinc	ABS	1400
KN4C0500K6--A21	1.000	1/4-20	0.630	0.500	0.090	Style 3	0.500	Steel	Clear Zinc	ABS	1300
KN4C0500K6D-A21	1.000	1/4-20	0.630	0.580	0.170	Style 3	0.500	Steel	Clear Zinc	ABS	1200
KN4C0625K6--A21	1.000	1/4-20	0.630	0.500	0.090	Style 3	0.625	Steel	Clear Zinc	ABS	1300
KN4C0750K6--A21	1.000	1/4-20	0.630	0.500	0.090	Style 3	0.750	Steel	Clear Zinc	Nylon	1200
KN4C1000K6D--21	1.000	1/4-20	0.630	0.580	0.170	Style 3	1.000	Steel	Clear Zinc	Polypropylene	1100
KN4C1500K6--A21	1.000	1/4-20	0.630	0.500	0.090	Style 3	1.500	Steel	Clear Zinc	ABS	1000
KN4C2125K6--21	1.000	1/4-20	0.630	0.500	0.090	Style 3	2.125	Steel	Clear Zinc	Polypropylene	750
KN5C0500K6D--2R	1.000	5/16-18	0.630	0.580	0.170	Style 3	0.500	Steel	Clear Zinc	Polypropylene	1200
KN5C0625K6C--21	1.000	5/16-18	0.630	0.810	0.400	Style 3	0.620	Steel	Clear Zinc	Polypropylene	900
KN5C0750K6D-A21	1.000	5/16-18	0.630	0.580	0.170	Style 3	0.750	Steel	Clear Zinc	ABS	1200
KN5C0875K6D--21	1.000	5/16-18	0.630	0.580	0.170	Style 3	0.875	Steel	Clear Zinc	Polypropylene	1000
KN5C1500K6D-A21	1.000	5/16-18	0.630	0.580	0.170	Style 3	1.500	Steel	Clear Zinc	ABS	800

Other configurations, thread sizes, materials, and customizations available upon request.

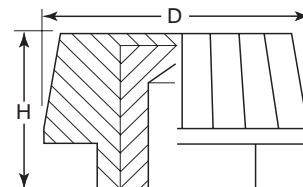
KGR Series

Specifications:

- Knob Material: Nylon
- Insert Material: Aluminum Inserts and Plated Steel Stud
- Color: Black

Features:

- Knurled matte finish for easy gripping
- High impact resistant material
- Resistant to most oils, fuels and greases



Female Knobs

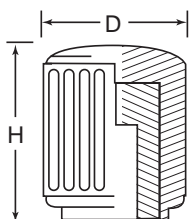
Item No.	Style	D in	Thread Size	H in	Bulk Pack Qty.
KGR1000A	Female	0.591	10 - 24	0.433	500
KGR1100A	Female	0.591	1/4 - 20	0.433	500
KGR1200A	Female	0.866	1/4 - 20	0.630	500
KGR1300A	Female	0.866	5/16 - 18	0.630	500

Male Knobs

Item No.	Style	D in	Thread Size	Stud Length in	H in	Bulk Pack Qty.
KGR2000A	Male	0.591	1-24	0.394	0.433	500
KGR2100A	Male	0.591	1/4-20	0.394	0.433	500
KGR2200A	Male	0.866	1/4-20	0.590	0.630	500
KGR2300A	Male	0.866	5/16-18	0.590	0.630	500

KNURLED KNOBS / PRESS ON KNOBS

KPK Series



Specifications:

- Knob Material: Phenolic
- Insert Material: See Table
- Color: Black

Features:

- Knurled matte finish provides secure grip
- High impact resistance
- Resistant to oils, fuels and greases
- Excellent thermal and electrical resistance

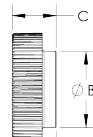
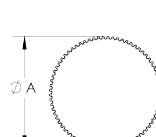
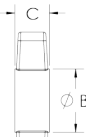
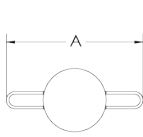
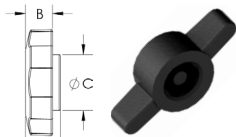
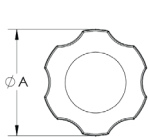
Female Knobs

Item No.	D in	H in	Thread Size	Insert Material	Plating Material	Bulk Pack Qty.
KPK1400A	0.551	0.630	10-32	Steel	Clear Zinc	500
KPK1500A	0.551	0.630	10-24	Steel	Clear Zinc	500
KPK1600A	0.787	0.866	10-24	Steel	Clear Zinc	500
KPK1700A	0.787	0.866	1/4-20	Steel	Clear Zinc	500

Male Knobs

Item No.	D in	H in	Thread Size	Stud Length in	Insert Material	Plating Material	Bulk Pack Qty.
KPK1000A	0.551	0.630	10-32	0.394	Brass	Plain	500
KPK1100A	0.551	0.630	10-24	0.394	Brass	Plain	500
KPK1200A	0.787	0.866	10-24	0.591	Brass	Plain	500
KPK1300A	0.787	0.866	1/4-20	0.591	Brass	Plain	500

KS Series



Type 1

Type 2

Type 3

Specifications

- Knob Material: Acetal
- Insert Material: Assemble on to socket head cap screw
- Color: Black

Features

- These knobs can be assembled on to a socket head cap screw thereby creating an instant thumbscrew without any need for glue or adhesive
- Please Note: These knobs cannot be assembled by hand and require the use of a punch press or hydraulic press to attach the socket head cap screw**
- Accepts coarse and fine thread pitch
- Textured finish to help hide dirt and scratches in the field
- Assembly fixtures are available for purchase

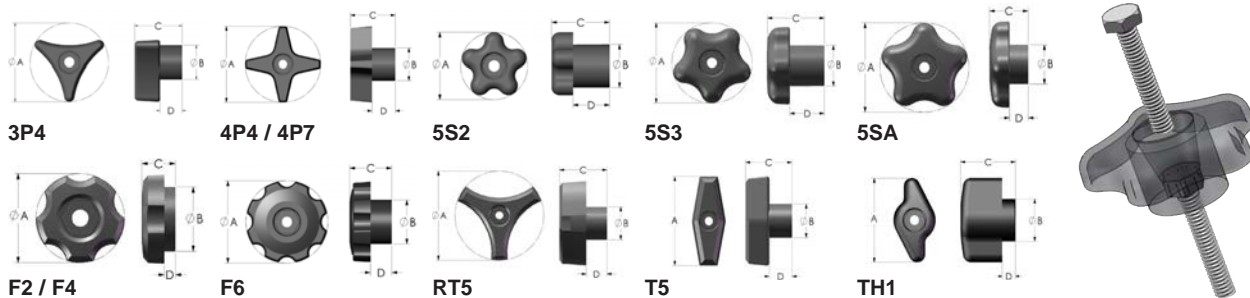
Socket Head Screw Caps

Item No.	A in	Accepts Thread Diameters	B in	C in	D in	Knob Type	Bulk Pack Qty.
KSN4---N1--5--	0.313	#4	0.280	0.190	0.060	Type 3	24700
KSN6---N1--5--	0.313	#6	0.280	0.190	0.060	Type 3	24700
KSN6---N2--5--	0.375	#6	0.360	0.230	0.060	Type 3	20000
KSN8---N2--5--	0.375	#8	0.360	0.230	0.060	Type 3	20000
KSM3---N2--5--	0.375	M3	0.360	0.230	0.060	Type 3	12500
KSN1---N3--5--	0.500	#10	0.420	0.250	0.070	Type 3	10000
KSN8---N3--5--	0.500	#8	0.420	0.250	0.070	Type 3	10000
KSM4---N3--5--	0.500	M4	0.420	0.250	0.070	Type 3	10000
KSN1---N4--5--	0.625	#11	0.420	0.250	0.080	Type 3	5000
KSN8---N4--5--	0.625	#8	0.420	0.250	0.080	Type 3	6000
KSM5---N4--5--	0.625	M5	0.420	0.250	0.080	Type 3	6500
KSN1---N5--5--	0.750	#10	0.520	0.310	0.140	Type 3	4000
KS4X---N5--5--	0.750	1/4	0.520	0.310	0.140	Type 3	4000
KSM6---N5--5--	0.750	M6	0.520	0.310	0.140	Type 3	4000
KSN1---N6--5--	1.000	#10	0.590	0.380	0.100	Type 3	1800
KS4X---N6--5--	1.000	1/4	0.590	0.380	0.100	Type 3	1800
KS5X---N6--5--	1.000	5/16	0.590	0.380	0.100	Type 3	1800
KSM5---N6--5--	1.000	M5	0.590	0.380	0.100	Type 3	1800
KSM6---N6--5--	1.000	M6	0.590	0.380	0.100	Type 3	1800
KSM8---N6--5--	1.000	M8	0.590	0.380	0.100	Type 3	1500
KSN1---T0--5--	1.020	#10	0.480	0.270	-	Type 2	7000
KSN8---T0--5--	1.020	#8	0.480	0.270	-	Type 2	7000
KSN1---T2--5--	1.250	#10	0.530	0.340	-	Type 2	3000
KS4X---O3--5--	1.500	1/4	0.375	0.475	0.780	Type 1	700
KS5X---O3--5--	1.500	5/16	0.375	0.475	0.780	Type 1	700
KS6X---O3--5--	1.500	3/8	0.375	0.475	0.780	Type 1	700
KSM1---O3--5--	1.500	M10	0.375	0.475	0.780	Type 1	700
KSM6---O3--5--	1.500	M6	0.375	0.475	0.780	Type 1	700
KSM8---O3--5--	1.500	M8	0.375	0.475	0.780	Type 1	700
KS4X---T3--5--	1.500	1/4	0.630	0.410	-	Type 2	2000
KS5X---T3--5--	1.500	5/16	0.630	0.410	-	Type 2	2300
KSM6---T3--5--	1.500	M6	0.630	0.410	-	Type 2	2300
KSM8---T3--5--	1.500	M8	0.630	0.410	-	Type 2	2300
KS6X---T6--5--	1.780	3/8	0.800	0.500	-	Type 2	1500
KSM1---T6--5--	1.780	M1	0.800	0.500	-	Type 2	1500

Other configurations, thread sizes, materials, and customizations available upon request.

SNAP LOCK KNOBS

Hex Series



Specifications

- Knob Material: Polypropylene
- Insert Material: Snap in your own hex head fastener
- Color: Black

Features

- Accepts hex nuts, lock nuts, tab bolts, and cap screws
- Snap into hex hole for a secure fit
- Perfect for MRO, prototypes, jigs, and fixtures
- Available for inch and metric fasteners
- Textured finish to help hide dirt and scratches in the field
- Impact resistant

Female Knobs

Item No.	A in	Thread Size	B in	C in	D in	Style Number	Bulk Pack Qty.
KNH10HEX3P4----	1.750	10-32 or 10-24	0.750	1.060	0.490	3P4	1200
KNH1-HEX3P4----	1.750	1/4-20 or 1/4-28	0.750	1.060	0.490	3P4	1200
KNH4-HEX3P4----	1.750	M6	0.750	1.060	0.490	3P4	1200
KNH10HEX4P4----	1.750	10-32 or 10-24	0.750	1.040	0.540	4P4	700
KNH1-HEX4P4----	1.750	1/4-20 or 1/4-28	0.750	1.040	0.540	4P4	1000
KNH4-HEX4P4----	1.750	M6	0.750	1.040	0.540	4P4	1000
KNH3-HEX4P7----	2.500	3/8-16 or 3/8-24	0.980	1.000	0.360	4P7	500
KNH6-HEX4P7----	2.500	M10	0.980	1.000	0.360	4P7	500
KNH7-HEX4P7----	2.500	1/2-13 or 1/2-20	0.980	1.000	0.360	4P7	500
KNH8-HEX4P7----	2.500	M12	0.980	1.000	0.360	4P7	400
KNH10HEX5S2----	1.380	10-32 or 10-24	0.850	1.150	0.700	5S2	1000
KNH1-HEX5S2----	1.380	1/4-20 or 1/4-28	0.850	1.150	0.700	5S2	1000
KNH2-HEX5S2----	1.380	5/16-18 or 5/16-24	0.850	1.150	0.700	5S2	1000
KNH4-HEX5S2----	1.380	M6	0.850	1.150	0.700	5S2	1000
KNH5-HEX5S2----	1.380	M8	0.850	1.150	0.700	5S2	1000
KNH1-HEX5S3A----	1.750	1/4-20 or 1/4-28	0.880	1.250	0.750	5S3	350
KNH2-HEX5S3A----	1.750	5/16-18 or 5/16-24	0.880	1.250	0.750	5S3	350
KNH3-HEX5S3A----	1.750	3/8-16 or 3/8-24	0.880	1.250	0.750	5S3	350
KNH5-HEX5S3A----	1.750	M8	0.880	1.250	0.750	5S3	350
KNH6-HEX5S3A----	1.750	M10	0.880	1.250	0.750	5S3	350
KNH4-HEX5S3A----	1.750	M6	0.880	1.250	0.750	5S3	350
KNH1-HEX5SA----	2.250	1/4-20 or 1/4-28	0.990	0.980	0.470	5SA	500
KNH2-HEX5SA----	2.250	5/16-18 or 5/16-24	0.990	0.980	0.470	5SA	500
KNH3-HEX5SA----	2.250	3/8-16 or 3/8-24	0.990	0.980	0.470	5SA	500
KNH4-HEX5SA----	2.250	M6	0.990	0.980	0.470	5SA	500
KNH5-HEX5SA----	2.250	M8	0.990	0.980	0.470	5SA	500
KNH6-HEX5SA----	2.250	M10	0.990	0.980	0.470	5SA	500
KNH10HEXF2----	1.380	10-32 or 10-24	0.980	0.590	0.170	F2	800
KNH1-HEXF2----	1.380	1/4-20 or 1/4-28	0.980	0.590	0.170	F2	800
KNH4-HEXF2----	1.380	M6	0.980	0.590	0.170	F2	800
KNH2-HEXF4----	1.750	5/16-18 or 5/16-24	1.250	0.860	0.280	F4	700
KNH3-HEXF4----	1.750	3/8-16 or 3/8-24	1.250	0.860	0.280	F4	700
KNH5-HEXF4----	1.750	M8	1.250	0.860	0.280	F4	700
KNH6-HEXF4----	1.750	M10	1.250	0.860	0.280	F4	700
KNH1-HEXF6----	2.380	1/4-20 or 1/4-28	1.250	1.230	0.620	F6	250
KNH2-HEXF6----	2.380	5/16-18 or 5/16-24	1.250	1.230	0.620	F6	250
KNH3-HEXF6----	2.380	3/8-16 or 3/8-24	1.250	1.230	0.620	F6	250
KNH4-HEXF6----	2.380	M6	1.250	1.230	0.620	F6	250
KNH5-HEXF6----	2.380	M8	1.250	1.230	0.620	F6	250
KNH6-HEXF6----	2.380	M10	1.250	1.230	0.620	F6	250
KNH7-HEXF6----	2.380	1/2-13 or 1/2-20	1.250	1.230	0.620	F6	250
KNH8-HEXF6----	2.380	M12	1.250	1.230	0.620	F6	250
KNH1-HEXRT5----	2.000	1/4-20 or 1/4-28	0.750	1.090	0.490	RT5	900
KNH2-HEXRT5----	2.000	5/16-18 or 5/16-24	0.750	1.090	0.490	RT5	900
KNH4-HEXRT5----	2.000	M6	0.750	1.090	0.490	RT5	900
KNH5-HEXRT5----	2.000	M8	0.750	1.090	0.490	RT5	900
KNH1-HEXT5----	2.000	1/4-20 or 1/4-28	0.750	1.060	0.490	T5	1200
KNH4-HEXT5----	2.000	M6	0.750	1.060	0.490	T5	1200
KNH10HEXTH1----	1.250	10-32 or 10-24	0.630	0.830	0.200	TH1	1200
KNH1-HEXTH1----	1.250	1/4-20 or 1/4-28	0.630	0.830	0.200	TH1	1200
KNH4-HEXTH1----	1.250	M6	0.630	0.830	0.200	TH1	1200

Other configurations, thread sizes, materials, and customizations available upon request.



Why Buy Innovative?

Extensive Product Choice

We are pleased to offer a wide variety of both standard and custom products in our full components catalog.



Easy Ordering

You can submit your order by phone, fax, or e-mail. For orders, free samples, no-obligation quotes or information about our products:

Tel: 800 566 2774

Fax: 847 885 9005

Email: sales@knobsources.com

Web: www.innovative-components.com

www.innovative-components.com

- Discover our product ranges
- Request free samples
- Download catalog & engineering drawings
- Live chat with our sales representatives



REFERENCE CHART – INCH & METRIC

FRACTIONAL to DECIMAL to MILLIMETER

FRACTIONS	DECIMALS	MILLIMETERS	FRACTIONS	DECIMALS	MILLIMETERS
$\frac{1}{64}$.015625	0.397	$\frac{33}{64}$.515625	13.097
$\frac{1}{32}$.03125	0.794	$\frac{35}{64}$.546875	13.891
$\frac{1}{16}$.0625	1.588	$\frac{37}{64}$.578125	14.684
$\frac{3}{64}$.046875	1.191	$\frac{39}{64}$.609375	15.478
$\frac{5}{64}$.078125	1.984	$\frac{41}{64}$.640625	16.272
$\frac{3}{32}$.09375	2.381	$\frac{43}{64}$.671875	17.066
$\frac{7}{64}$.109375	2.778	$\frac{45}{64}$.703125	17.859
$\frac{1}{8}$.125	3.175	$\frac{47}{64}$.734375	18.653
$\frac{9}{64}$.140625	3.572	$\frac{49}{64}$.765625	19.447
$\frac{5}{32}$.15625	3.969	$\frac{51}{64}$.796875	20.241
$\frac{11}{64}$.171875	4.366	$\frac{53}{64}$.828125	21.034
$\frac{3}{16}$.1875	4.763	$\frac{55}{64}$.859375	21.828
$\frac{13}{64}$.203125	5.159	$\frac{57}{64}$.890625	22.622
$\frac{7}{32}$.21875	5.556	$\frac{59}{64}$.921875	23.416
$\frac{15}{64}$.234375	5.953	$\frac{61}{64}$.953125	24.209
$\frac{1}{4}$.25	6.350	$\frac{63}{64}$.984375	25.003
$\frac{17}{64}$.265625	6.747	1	1.00	25.400
$\frac{9}{32}$.28125	7.144			
$\frac{19}{64}$.296875	7.541			
$\frac{5}{16}$.3125	7.938			
$\frac{21}{64}$.328125	8.334			
$\frac{11}{32}$.34375	8.731			
$\frac{23}{64}$.359375	9.128			
$\frac{3}{8}$.375	9.525			
$\frac{25}{64}$.390625	9.922			
$\frac{13}{32}$.40625	10.319			
$\frac{27}{64}$.421875	10.716			
$\frac{7}{16}$.4375	11.113			
$\frac{29}{64}$.453125	11.509			
$\frac{15}{32}$.46875	11.906			
$\frac{31}{64}$.484375	12.303			
$\frac{1}{2}$.50	12.700			

MM to Inch

1 mm0.03937 in	47 mm1.85039 in
2 mm0.07874 in	48 mm1.88976 in
3 mm0.11811 in	49 mm1.92913 in
4 mm0.15748 in	50 mm1.96850 in
5 mm0.19685 in	51 mm2.00787 in
6 mm0.23622 in	52 mm2.04724 in
7 mm0.27559 in	53 mm2.08661 in
8 mm0.31496 in	54 mm2.12598 in
9 mm0.35433 in	55 mm2.16535 in
10 mm0.39370 in	56 mm2.20472 in
11 mm0.43307 in	57 mm2.24409 in
12 mm0.47244 in	58 mm2.28346 in
13 mm0.51181 in	59 mm2.32283 in
14 mm0.55118 in	60 mm2.36220 in
15 mm0.59055 in	61 mm2.40157 in
16 mm0.62992 in	62 mm2.44094 in
17 mm0.66929 in	63 mm2.48031 in
18 mm0.70866 in	64 mm2.51969 in
19 mm0.74803 in	65 mm2.55906 in
20 mm0.78740 in	66 mm2.59843 in
21 mm0.82677 in	67 mm2.63780 in
22 mm0.86614 in	68 mm2.67717 in
23 mm0.90551 in	69 mm2.71654 in
24 mm0.94488 in	70 mm2.75591 in
25 mm0.98425 in	71 mm2.79528 in
26 mm1.02362 in	72 mm2.83465 in
27 mm1.06299 in	73 mm2.87402 in
28 mm1.10236 in	74 mm2.91339 in
29 mm1.14173 in	75 mm2.95276 in
30 mm1.18110 in	76 mm2.99213 in
31 mm1.22047 in	77 mm3.03150 in
32 mm1.25984 in	78 mm3.07087 in
33 mm1.29921 in	79 mm3.11024 in
34 mm1.33858 in	80 mm3.14961 in
35 mm1.37795 in	81 mm3.18898 in
36 mm1.41732 in	82 mm3.22835 in
37 mm1.45669 in	83 mm3.26772 in
38 mm1.49606 in	84 mm3.30709 in
39 mm1.53543 in	85 mm3.34646 in
40 mm1.57480 in	86 mm3.38583 in
41 mm1.61417 in	87 mm3.42520 in
42 mm1.65354 in	88 mm3.46457 in
43 mm1.69291 in	89 mm3.50394 in
44 mm1.73228 in	90 mm3.54331 in
45 mm1.77165 in	100 mm ...3.93701 in
46 mm1.81102 in	

INNOVATIVE COMPONENTS, INC.
AN ESSENTRA COMPANY

for Innovative Solutions

1050 National Parkway
Schaumburg, IL 60173

(800) 566-2774
Fax: (847) 885-9005

www.innovative-components.com
sales@knobsources.com



**INNOVATIVE
COMPONENTS, INC.**
AN ESSENTRA COMPANY

LET'S TALK



800-566-2774



sales@knobsource.com

www.innovative-components.com